



Donovan Saunders

Candidate Property Practitioner
Registered with PPRA
(FFC 121 151 8)

0743713355

donovan@newpointproperty.co.za

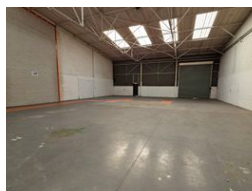
Contact Head Office

010 0354431

Office 40A
Eden Meadows Complex
1 Van Riebeeck Avenue
Greenstone
1609



Web Ref DS516JPTLC2



R38,700 pm

Gross Monthly Rental R38,700 Excl. VAT

4 0

510sqm Industrial warehouse to let in Jet Park

This meticulously maintained 510sqm industrial facility in Jet Park offers a professional, functional environment suited to a variety of business needs. The property features a neat double-volume office section, comprising a welcoming reception area, an open-plan ground floor workspace, and three private offices on the upper level—ideal for administrative and managerial operations.

The warehouse area offers generous height, perfect for racking or bulk storage, and is easily accessible via a large on-grade roller shutter door, ensuring smooth movement of goods and vehicles.

Located within a secure, access-controlled industrial park, the property enjoys 24-hour security and excellent exposure. Positioned

Features

Zoning Industrial

Interior

| | |
|---------------|-----|
| Power 3 Phase | Yes |
| Power Amps | 160 |

Exterior

| | |
|----------------------|-----|
| Security | Yes |
| Covered Parking Bays | 4 |

Sizes

| | |
|-----------------|-------------------|
| Floor Size | 516m ² |
| Land Size | 516m ² |
| Building Height | 6m |