



Donovan Saunders
Candidate Property
Practitioner
Registered with PPRA
(FFC 121 151 8)
0743713355

donovan@newpointproperty.co.za

Contact Head Office

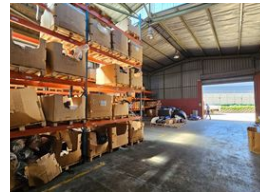
010 0354431

Office 40A
Eden Meadows Complex
1 Van Riebeeck Avenue
Greenstone
1609

357m² Warehouse To Let in Jet Park



Web Ref CL13120



R24,181 pm

Gross Monthly Rental R24,181 Excl. VAT

Monthly Rates R768.0 Excl. VAT

2 1

Prime 357m² Industrial Unit on Kelly Road – Visibility, Versatility & Connectivity

Elevate your business presence with this well-located 357m² industrial unit on the bustling Kelly Road in Jet Park. The office component is smartly designed with a professional reception, spacious open-plan office, kitchenette, and separate ablutions for admin and workshop staff, ensuring a smooth workflow and comfortable environment for your team.

The 250m² warehouse section offers excellent internal height and is easily accessible via a large on-grade roller shutter door, ideal for efficient goods handling. With 3-phase power and a layout suited for light to medium industrial operations, this unit delivers practicality and performance. This Jet Park gem is situated close to major highways and transport networks and offers unbeatable

Features

Zoning Industrial

Interior

Power 3 Phase	Yes
Power Amps	100

Exterior

Covered Parking Bays	2
Open Parking Bays	1

Sizes

Floor Size	357m ²
Land Size	357m ²
Building Height	6m



<https://www.newpointproperty.co.za>