



**Donovan Saunders**

Candidate Property Practitioner  
Registered with PPRA  
(FFC 121 151 8)

0743713355

[donovan@newpointproperty.co.za](mailto:donovan@newpointproperty.co.za)

Contact Head Office

010 0354431

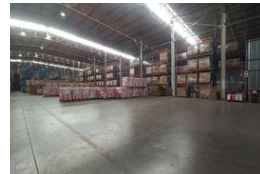
Office 40A  
Eden Meadows Complex  
1 Van Riebeeck Avenue  
Greenstone  
1609

10,786m<sup>2</sup> Warehouse To Let in Hughes

NEW



Web Ref CL13184



R755,020 pm

Gross Monthly Rental R755,020 Excl. VAT

Monthly Rates R53,930 Excl. VAT



0



0

## Massive 10,786m<sup>2</sup> Warehouse in Jet Park – Fully Racked & Ready for Logistics

Streamline your operations with this expansive 10,786m<sup>2</sup> warehouse in the heart of Jet Park, designed for high-efficiency logistics, storage, or distribution. Fully racked and equipped with an internal sprinkler system, the warehouse features excellent height, abundant natural light, and a functional layout ideal for handling large volumes with ease.

The property includes 8,808m<sup>2</sup> of warehouse space and 1,978m<sup>2</sup> of modern office accommodation, offering the perfect blend of operational power and professional presence. With multiple loading bays, superlink-friendly yard access, and excellent staff amenities, this facility ensures seamless day-to-day operations. Located in a strategic East Rand industrial hub with fast access to

## Features

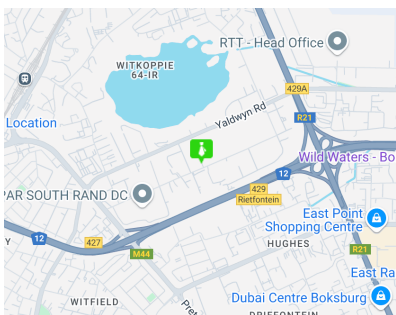
**Zoning** Industrial

### Interior

Power 3 Phase Yes

### Sizes

Floor Size 10,786m<sup>2</sup>  
Land Size 21,000m<sup>2</sup>  
Building Height 10m



<https://www.newpointproperty.co.za>