



Donovan Saunders

Candidate Property Practitioner
Registered with PPRA
(FFC 121 151 8)

0743713355

donovan@newpointproperty.co.za

Contact Head Office

010 0354431

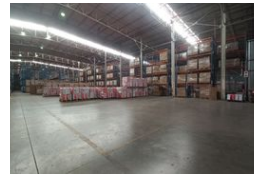
Office 40A
Eden Meadows Complex
1 Van Riebeeck Avenue
Greenstone
1609

10,786m² Warehouse To Let in Hughes

NEW



Web Ref CL12985



R755,020 pm

Gross Monthly Rental R755,020 Excl. VAT

Monthly Rates R53,930 Excl. VAT



0



0

10,786m² Jet Park Distribution Powerhouse with Racking, Sprinklers & Prime Access

Unlock efficiency with this massive 10,786m² warehouse in Jet Park—perfectly suited for storage, logistics, or distribution operations. Fully racked and fitted with an internal sprinkler system, the warehouse offers excellent height, natural light, and a streamlined layout that supports high-volume throughput with ease.

The facility features 8,808m² of warehouse space and 1,978m² of quality office accommodation, blending operational functionality with professional workspace. Multiple loading bays, generous yard space, and superlink access ensure smooth logistics, while ample staff facilities add everyday convenience. Located in a prime East Rand industrial hub with quick access to key highways,

Features

Zoning Industrial

Interior

Power 3 Phase Yes

Sizes

Floor Size 10,786m²
Land Size 21,000m²
Building Height 10m

