



William Christie
Candidate Property
Practitioner
Registered with PPRA
(FFC 121 152 2)
0740552244

william@newpointproperty.co.za

Contact Head Office

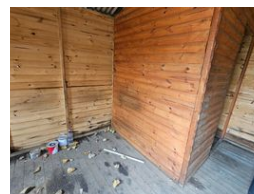
010 0354431

Office 40A
Eden Meadows Complex
1 Van Riebeeck Avenue
Greenstone
1609

700m² Industrial Yard To Let in Comet



Web Ref CL13759



R10,000 pm

Gross Monthly Rental R10,000 Excl. VAT

Monthly Rates R500 Excl. VAT



Secure Industrial Yard with Office Space in Comet, Boksburg

Take advantage of this well-maintained industrial yard available to let in the established Comet industrial area of Boksburg. Ideal for truck parking, fleet storage, or general goods storage, the property provides a functional and secure outdoor solution for various business operations.

The yard is fully fenced with controlled access and includes a small on-site office space for administration or dispatch, along with staff ablutions for added convenience. Situated within a larger industrial park offering 24-hour access and security, this property is

Features

Zoning Industrial

Interior

Floor Loading Cap. 5 Tn/m²
Power 3 Phase Yes

Sizes

Floor Size 700m²
Land Size 700m²

