



Wayne Churchyard
0817726802
wayne@newpointproperty.co.za

Contact Head Office

010 0354431

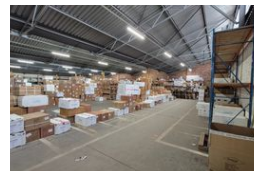
Office 40A
Eden Meadows Complex
1 Van Riebeeck Avenue
Greenstone
1609

5,356m² Warehouse To Let in Anderbolt

NEW



Web Ref CL13982



R267,800 pm

Gross Monthly Rental R267,800 Excl. VAT



0



0

5,356m² Warehouse with 8 Dock Doors in Secure Anderbolt Park – Prime Logistics Hub

Unlock seamless logistics in this well-maintained 5,356m² warehouse located in a secure industrial park in Anderbolt. With excellent height to the eaves, abundant natural light, and 8 large dock-height roller shutter doors, the facility is perfectly suited for warehousing, distribution, or logistics operations. The dedicated yard space ensures smooth truck access and maneuverability, including super link access.

The property features a spacious office component with a professional reception area, multiple private offices, a boardroom, a kitchenette, and separate ablutions for office and warehouse staff. Conveniently situated just off Atlas Road with quick access to the N12 and N17 highways, this site delivers efficiency, space, and connectivity. Don't miss out—contact us today to arrange a

Features

Zoning Industrial

Interior

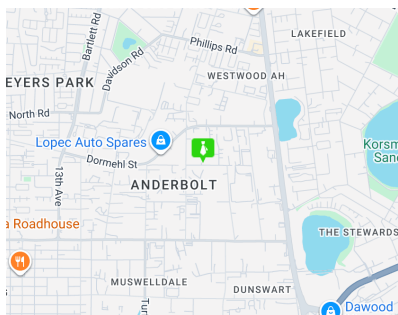
Power 3 Phase Yes

Exterior

Security Yes

Sizes

Floor Size 5,356m²



<https://www.newpointproperty.co.za>