



Wayne Churchyard
0817726802
wayne@newpointproperty.co.za

Contact Head Office

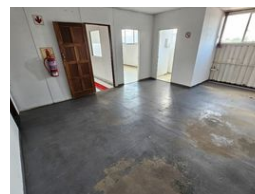
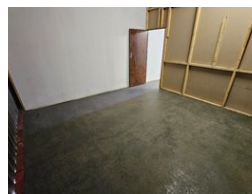
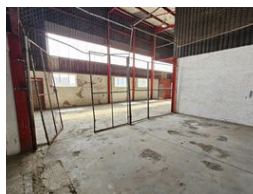
010 0354431

Office 40A
Eden Meadows Complex
1 Van Riebeeck Avenue
Greenstone
1609

371m² Warehouse To Let in Anderbolt



Web Ref CL13062



R19,292 pm

Gross Monthly Rental R19,292 Excl. VAT



0



0

371m² Warehouse to Let in Secure Anderbolt Park – Ideal for Industrial Use

This well-kept 371m² warehouse in the heart of Anderbolt offers a functional and secure space, perfect for industrial or storage operations. Featuring excellent height to the eaves, abundant natural light, and two large on-grade roller shutter doors, the unit ensures smooth workflow and accessibility. Equipped with reliable three-phase power, it's ready to support a range of business activities.

The premises include a compact office component, dedicated staff ablutions, and ample parking for both employees and visitors. Located just off Main Reef Road with easy access to the N12 and N17 highways, this property combines convenience with

Features

Zoning Industrial

Interior

Power 3 Phase Yes

Exterior

Security Yes

Sizes

Floor Size 371m²
Land Size 20,000m²



<https://www.newpointproperty.co.za>