



Wayne Churchyard
0817726802
wayne@newpointproperty.co.za

Contact Head Office

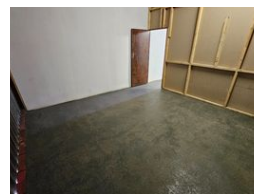
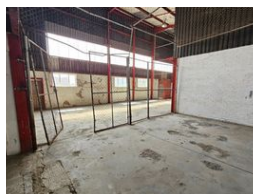
010 0354431

Office 40A
Eden Meadows Complex
1 Van Riebeeck Avenue
Greenstone
1609

371m² Warehouse To Let in Anderbolt



Web Ref CL12781



R19,292 pm

Gross Monthly Rental R19,292 Excl. VAT



Prime 371m² Warehouse for Lease in Anderbolt

This well-maintained 371m² warehouse, located in a secure industrial park in the sought-after Anderbolt area, is now available for lease. Designed for operational efficiency, the property features impressive eave heights, ample natural light, and two large on-grade roller shutter doors for easy access. With three-phase power it's perfect for various industrial and storage applications.

The unit also includes a compact office component, dedicated ablution facilities, and ample parking for both staff and visitors. Situated just off Main Reef Road, with easy access to the N12 and N17 highways, this property offers excellent connectivity in a

Features

Zoning Industrial

Interior

Power 3 Phase

Yes

Exterior

Security

Yes

Sizes

Floor Size

371m²

Land Size

20,000m²



<https://www.newpointproperty.co.za>