

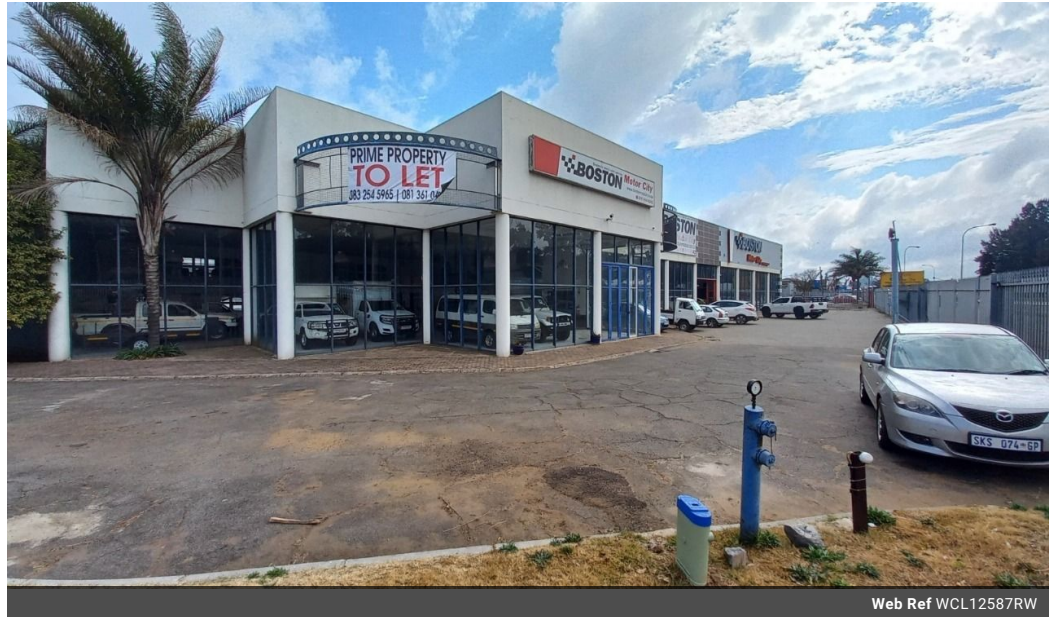


Wayne Churchyard
0817726802
wayne@newpointproperty.co.za

Contact Head Office

010 0354431

Office 40A
Eden Meadows Complex
1 Van Riebeeck Avenue
Greenstone
1609



Web Ref WCL12587RW



R160,000 pm

Gross Monthly Rental R160,000 Excl. VAT

8 20

Prime Showroom & Workshop Opportunity on Busy Atlas Road, Anderbolt

This high-exposure standalone property on Atlas Road is ideal for a motor dealership or automotive-related business. Boasting two bright double-volume showrooms and a fully equipped workshop with two car lifts, the site is designed for seamless operations. A spacious yard, secure customer and staff parking, and a robust three-phase power supply further enhance its functionality.

Inside, the building offers a professional reception area, a convenient kitchenette, and clean ablution facilities. Located just minutes from the N12 and N17 highways, this well-positioned property provides outstanding visibility and access in one of

Features

Zoning Industrial

Interior

Power 3 Phase	Yes
Power Amps	150

Exterior

Security	Yes
Covered Parking Bays	8
Open Parking Bays	20

Sizes

Floor Size	2,300m ²
Land Size	3,850m ²

