



Wayne Churchyard
0817726802
wayne@newpointproperty.co.za

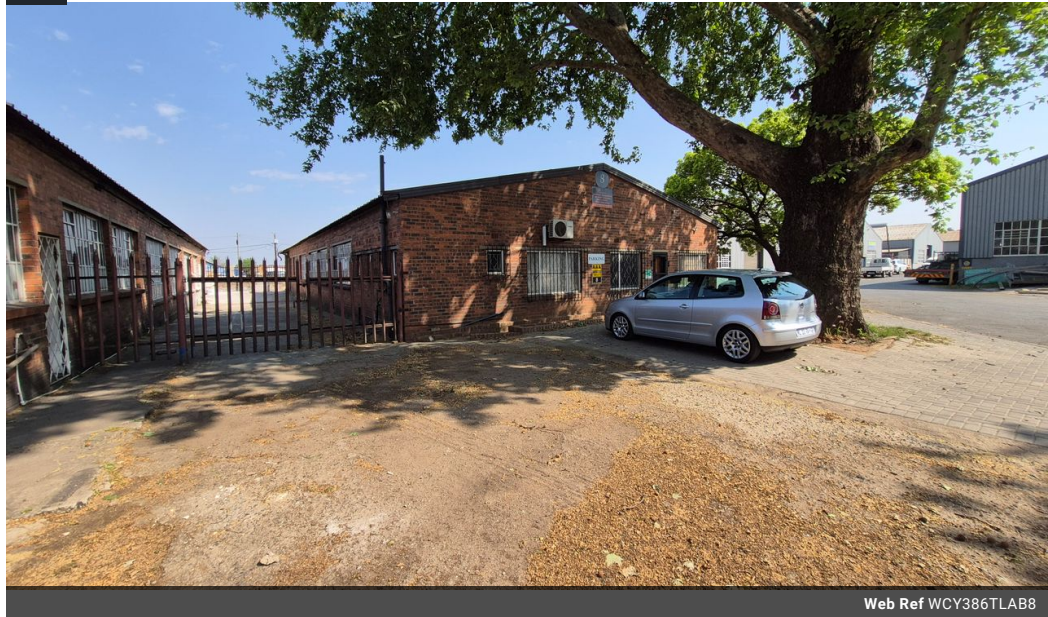
Contact Head Office

010 0354431

Office 40A
Eden Meadows Complex
1 Van Riebeeck Avenue
Greenstone
1609

386m² Factory To Let in Anderbolt

NEW



Web Ref WCY386TLAB8



R15,850 pm

Gross Monthly Rental R15,850 Excl. VAT



0



0

Neat 386m2 Factory To Let in Anderbolt

This neat 386m2 Factory with yard is available To Let in a safe and secure industrial park in the popular Anderbolt area. The Factory has great height to the eaves with natural light flowing throughout the entire space, It is also equipped with a large on grade roller shutter door and a ample three phase power supply.

The unit offers a reception area, large office, kitchenette and ablution facilities for office and factory staff. The park is in a great

Features

Zoning Industrial

Interior

Power 3 Phase

Yes

Exterior

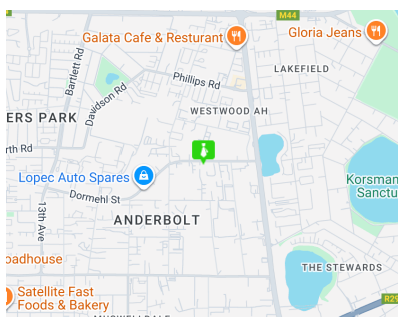
Security

Yes

Sizes

Floor Size

386m²



<https://www.newpointproperty.co.za>