



Wayne Churchyard
0817726802
wayne@newpointproperty.co.za

Contact Head Office

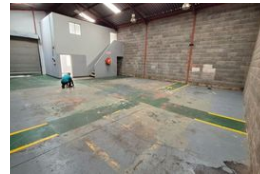
010 0354431

Office 40A
Eden Meadows Complex
1 Van Riebeeck Avenue
Greenstone
1609

190m² Factory To Let in Anderbolt



Web Ref CL14112



R11,400 pm

Gross Monthly Rental R11,400 Excl. VAT

0 0

190m² Factory Unit To Let in Anderbolt

This neat 190m² factory unit is located in a secure industrial park in the sought-after Anderbolt area. With great height to the eaves, ample natural light, a large on-grade roller shutter door, and reliable three-phase power, it's ideal for small-scale manufacturing or storage.

The unit includes a reception area, two private offices, and separate ablutions for both admin and warehouse staff, ensuring a professional and functional workspace. Conveniently positioned near the N12 and N17 highways, this property offers excellent

Features

Zoning Industrial

Interior

Power 3 Phase Yes

Exterior

Security Yes

Sizes

Floor Size 190m²

