



Wayne Churchyard
0817726802
wayne@newpointproperty.co.za

Contact Head Office

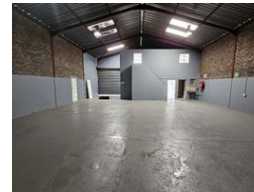
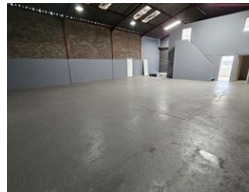
010 0354431

Office 40A
Eden Meadows Complex
1 Van Riebeeck Avenue
Greenstone
1609

264m² Factory To Let in Anderbolt



Web Ref CL13556



R13,728 pm

Gross Monthly Rental R13,728 Excl. VAT

0 0

Versatile 264m² Factory in Secure Anderbolt Park – Ideal for Light Industrial Use

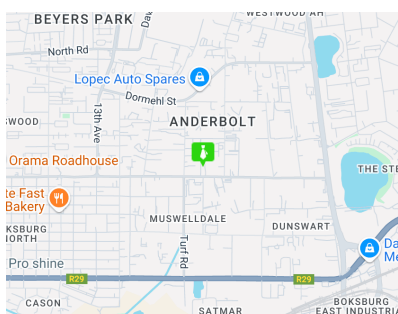
Position your business in the heart of Anderbolt with this well-maintained 264m² factory, located in a secure industrial park with excellent access to the N12 and N17 highways. The warehouse features great height to the eaves, plenty of natural light, a large on-grade roller shutter door, three-phase power, and a mezzanine level—perfect for storage or additional operational space.

The office component includes a welcoming reception area, three private offices, a kitchenette, and dedicated ablution facilities for both office and warehouse staff. This clean, functional space offers an ideal setup for light manufacturing, engineering, or

Features

Zoning Industrial

Interior			Exterior		Sizes
Power 3 Phase	Yes		Security	Yes	Floor Size 264m ²



<https://www.newpointproperty.co.za>