



Wayne Churchyard
0817726802
wayne@newpointproperty.co.za

Contact Head Office

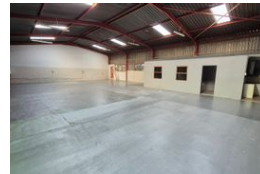
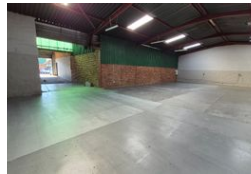
010 0354431

Office 40A
Eden Meadows Complex
1 Van Riebeeck Avenue
Greenstone
1609

302m² Factory To Let in Anderbolt



Web Ref WCY302TLAB



R14,500 pm

Gross Monthly Rental R14,500 Excl. VAT



0



0

Neat 302m² Factory To Let in Anderbolt

This neat 302m² factory is available immediately To Let in a safe and secure industrial park in the popular Anderbolt area. The factory has great height to the eaves with natural light flowing throughout the entire space, It is also equipped with an on grade roller shutter doors and a ample three-phase power supply.

The factory offers two small offices, kitchenette and ablution facilities for office and factory staff. The park is in a great location

Features

Zoning Industrial

Interior

Power 3 Phase

Yes

Exterior

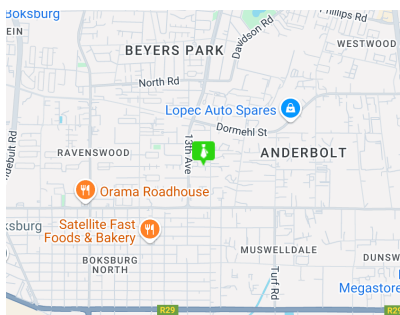
Security

Yes

Sizes

Floor Size

302m²



<https://www.newpointproperty.co.za>