



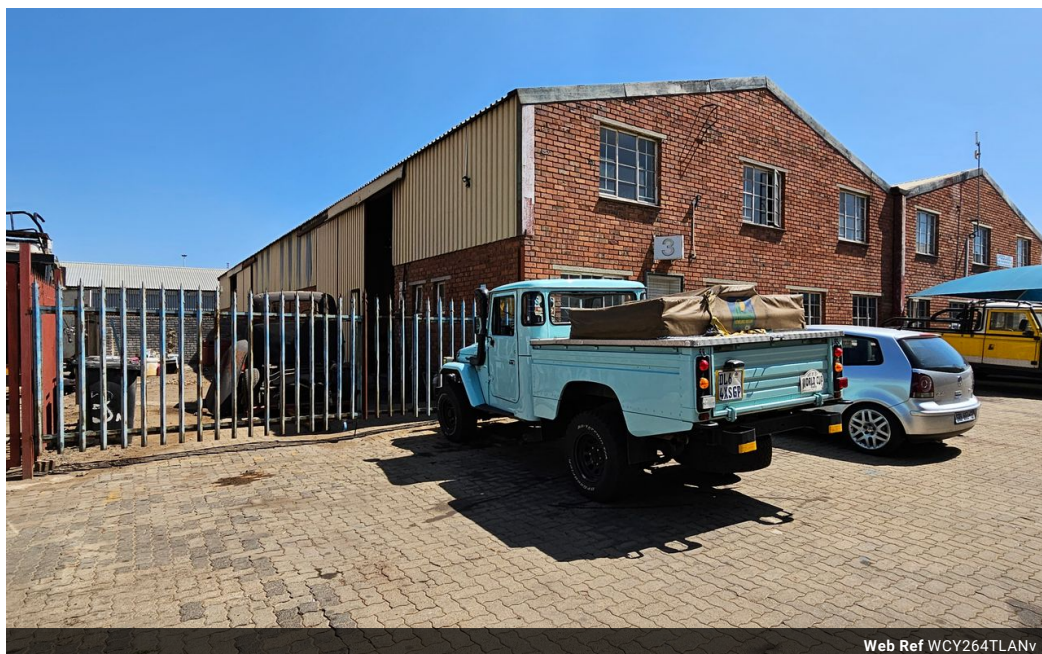
Wayne Churchyard  
0817726802  
wayne@newpointproperty.co.za

Contact Head Office

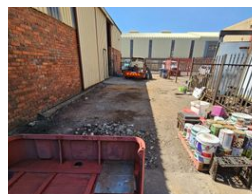
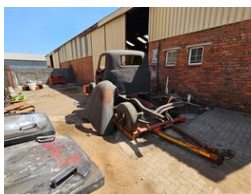
010 0354431

Office 40A  
Eden Meadows Complex  
1 Van Riebeeck Avenue  
Greenstone  
1609

264m<sup>2</sup> Factory To Let in Anderbolt



Web Ref WCY264TLANv



R11,900 pm

Gross Monthly Rental R11,900 Excl. VAT



## 264m<sup>2</sup> Factory with yard To Let in Anderbolt

This neat 264m<sup>2</sup> Factory with yard is available To Let in a safe and secure industrial park in the popular Anderbolt area. The factory has great height to the eaves with natural light flowing throughout the entire space, It is also equipped with a mezzanine floor, large on grade roller shutter door and has an ample three phase power supply.

The factory offers a welcoming open plan reception area, multiple offices, kitchenette and ablution facilities for office and factory

## Features

**Zoning** Industrial

### Interior

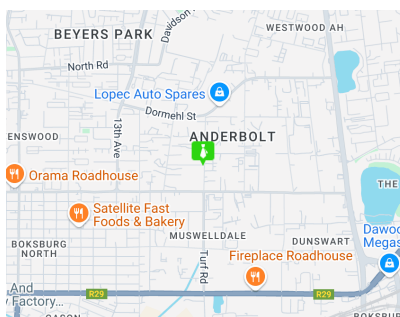
Power 3 Phase	Yes
Power Amps	63

### Exterior

Security	Yes
Open Parking Bays	4

### Sizes

Floor Size	264m <sup>2</sup>
------------	-------------------



<https://www.newpointproperty.co.za>