



Wayne Churchyard
0817726802
wayne@newpointproperty.co.za

Contact Head Office

010 0354431

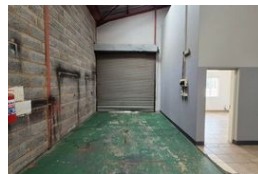
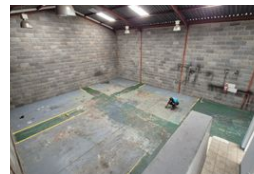
Office 40A
Eden Meadows Complex
1 Van Riebeeck Avenue
Greenstone
1609

190m² Factory To Let in Anderbolt

NEW



Web Ref WCY190TLABRW



R11,400 pm

Gross Monthly Rental R11,400 Excl. VAT



Neat 190m² Factory To Let in Secure Anderbolt Industrial Park

This well-maintained 190m² factory is immediately available in a secure park in the highly sought-after Anderbolt area. With excellent height to the eaves, ample natural light, a large on-grade roller shutter door, and reliable three-phase power, the space is perfect for light manufacturing or warehousing operations.

The unit includes a welcoming reception area, two compact offices, and ablution facilities for both office and factory staff. Ideally

Features

Zoning Industrial

Interior
Power 3 Phase Yes

Exterior
Security Yes

Sizes
Floor Size 190m²

