



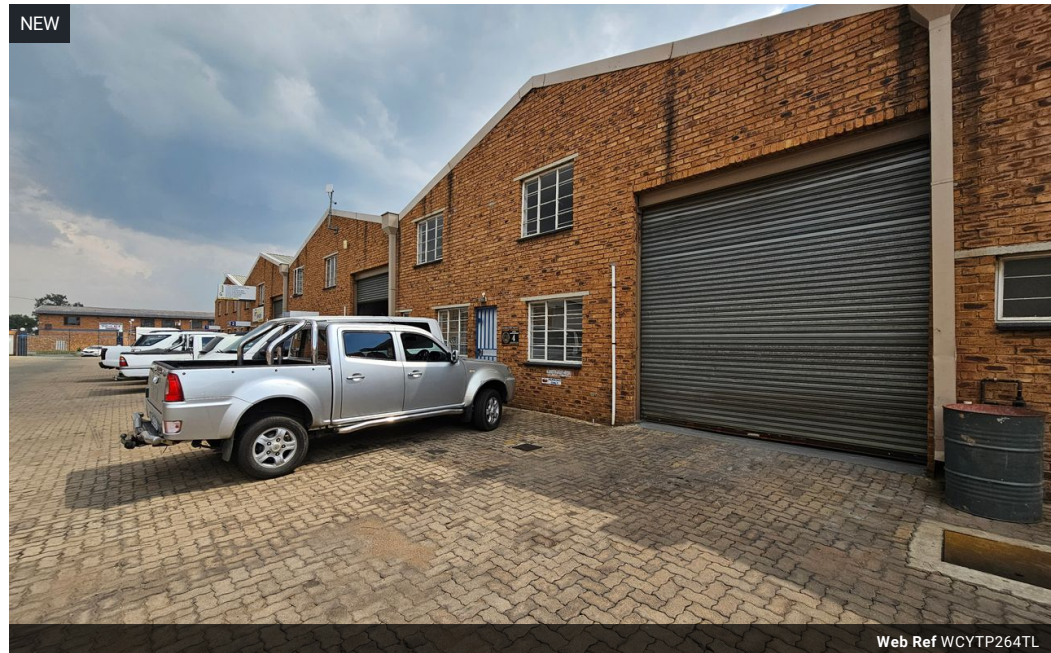
Wayne Churchyard
0817726802
wayne@newpointproperty.co.za

Contact Head Office

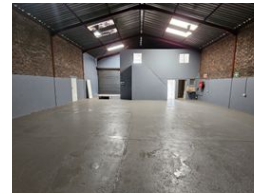
010 0354431

Office 40A
Eden Meadows Complex
1 Van Riebeeck Avenue
Greenstone
1609

264m² Factory To Let in Anderbolt



Web Ref WCYTP264TL



R13,728 pm

Gross Monthly Rental R13,728 Excl. VAT

0 0

Neat 264m² Factory To Let in Anderbolt

This neat 264m² Factory is available To Let in a safe and secure industrial park in the popular Anderbolt area. The factory has great height to the eaves with natural light flowing throughout the entire space, It is also equipped with a large grade roller shutter door, ample three phase power supply and a mezzanine floor that overlooks the factory floor.

The factory offers a spacious reception area, three offices, kitchenette and ablution facilities for office and factory staff. The park

Features

Zoning Industrial

Interior			Exterior		Sizes
Power 3 Phase	Yes		Security	Yes	Floor Size 264m ²

