



Wayne Churchyard
0817726802
wayne@newpointproperty.co.za

Contact Head Office

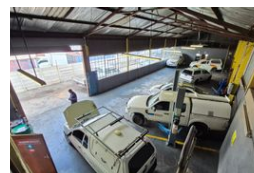
010 0354431

Office 40A
Eden Meadows Complex
1 Van Riebeeck Avenue
Greenstone
1609

280m² Factory To Let in Anderbolt



Web Ref WCY280ABTL1



R11,700 pm

Gross Monthly Rental R11,700 Excl. VAT

 0  4

280m² Factory with yard To Let in Anderbolt, Boksburg

This 280m² Factory is available immediately To Let in a safe and secure park in the popular Anderbolt area. The Factory has great height to the eaves with natural light flowing throughout the entire space, It is also equipped with a large on grade roller shutter door, spacious yard and a ample three phase power supply.

The factory offers a welcoming reception area, one large office, kitchenette and ablution facilities for office and factory staff. The

Features

Zoning Industrial

Interior

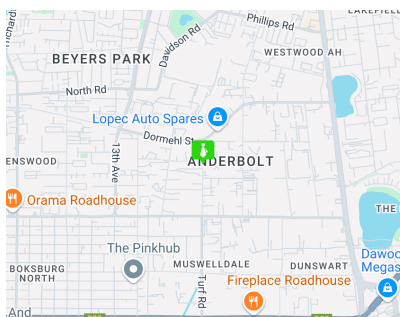
Power 3 Phase Yes

Exterior

Security Yes
Open Parking Bays 4

Sizes

Floor Size 280m²



<https://www.newpointproperty.co.za>