



Wayne Churchyard  
0817726802  
wayne@newpointproperty.co.za

Contact Head Office

010 0354431

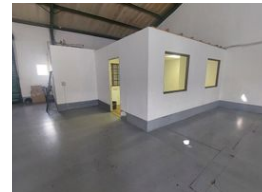
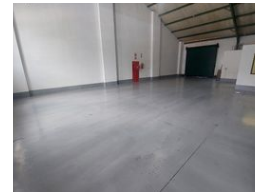
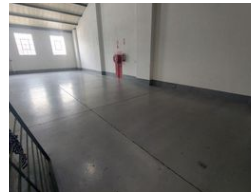
Office 40A  
Eden Meadows Complex  
1 Van Riebeeck Avenue  
Greenstone  
1609

236m<sup>2</sup> Warehouse To Let in Morehill

NEW



Web Ref CL13717



R15,104 pm

Gross Monthly Rental R15,104 Excl. VAT



0



3

## Prime Light Industrial Unit in Secure Morehill Park Versatile 236m<sup>2</sup> Space with Excellent Access and

Position your business in this clean and functional 236m<sup>2</sup> unit, ideally located in a secure, access-controlled industrial park in the sought-after Morehill area. With excellent height, natural lighting, and a large on-grade roller shutter door, the space is well-suited for light manufacturing, warehousing, or distribution. A robust three-phase power supply supports smooth operations for power-intensive activities.

The unit features a welcoming reception, private office, storeroom, kitchenette, and neat staff ablutions—providing a fully functional and professional work environment. Ample on-site parking and easy access to the N12 and N17 via Snake Road enhance both staff and logistical convenience. This is a smart, move-in-ready solution for businesses seeking efficiency and

## Features

**Zoning** Industrial

### Interior

Power 3 Phase Yes

### Exterior

Security Yes  
Open Parking Bays 3

### Sizes

Floor Size 236m<sup>2</sup>

