



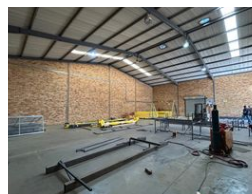
Kobus Louw
0745422026
kobus@newpointproperty.co.za

Contact Head Office

010 0354431

Office 40A
Eden Meadows Complex
1 Van Riebeeck Avenue
Greenstone
1609

600m² Warehouse To Let in Brentwood Park



R45,000 pm

Gross Monthly Rental R45,000 Excl. VAT Monthly Levy R9,000 Excl. VAT

0 5

Prime 600sqm Warehouse to let in Brentwood Business Park

This 600m² industrial unit offers a practical and efficient layout, ideal for businesses requiring a balance between office and warehouse space. The ground floor includes a neat reception area that sets a professional tone, along with a dedicated office, fully equipped kitchen, and two separate bathrooms for office and warehouse staff. The warehouse is easily accessed via a large roller shutter door, ensuring smooth handling of goods and efficient logistical operations.

On the upper level, the unit features two open-plan offices and a boardroom, all with views over the warehouse floor—perfect for management oversight and streamlined communication between teams. This smart layout provides flexibility and functionality,

Features

Zoning Industrial

Interior

Air Conditioning	Yes
Power 3 Phase	Yes
Power Amps	100

Exterior

Security	Yes
Open Parking Bays	5

Sizes

Floor Size	600m ²
Land Size	50,000m ²
Building Height	8m

