



Kobus Louw
0745422026
kobus@newpointproperty.co.za

Contact Head Office

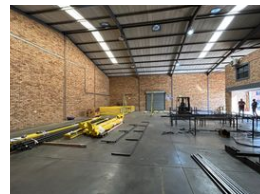
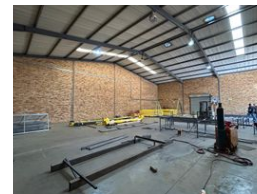
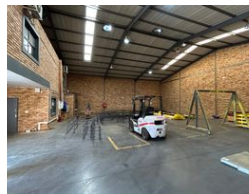
010 0354431

Office 40A
Eden Meadows Complex
1 Van Riebeeck Avenue
Greenstone
1609

600m² Warehouse To Let in Brentwood Park



Web Ref TL600BBPu16



R54,000 pm

Gross Monthly Rental R54,000 Excl. VAT

0 5

Ideal 600sqm Warehouse to let in Brentwood Business Park

This 600sqm industrial unit offers a well-balanced layout that caters to both office and warehouse operations. On the ground floor, it features a neat reception area that provides a professional first impression, along with a dedicated office space and a fully equipped kitchen. Two bathrooms—separately allocated for office and warehouse staff—enhance the functionality and comfort of the workspace. The warehouse section is accessible via a large roller shutter door, allowing for efficient loading, offloading, and logistical flow.

Upstairs, the unit boasts two spacious open-plan offices and a boardroom, all overlooking the warehouse floor. This elevated setup supports effective oversight and seamless coordination between administrative and operational teams. The combination of quality

Features

Zoning Industrial

Interior

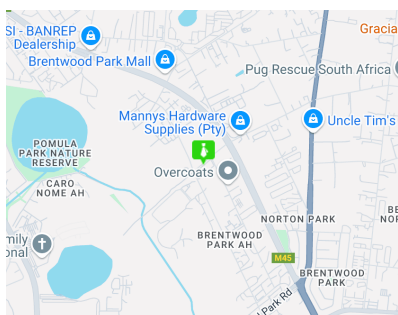
Air Conditioning	Yes
Power 3 Phase	Yes
Power Amps	63

Exterior

Security	Yes
Open Parking Bays	5

Sizes

Floor Size	600m ²
Land Size	20,000m ²
Building Height	9m



<https://www.newpointproperty.co.za>