



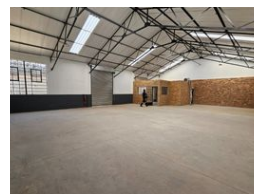
Wayne Churchyard  
0817726802  
wayne@newpointproperty.co.za

Contact Head Office

010 0354431

Office 40A  
Eden Meadows Complex  
1 Van Riebeeck Avenue  
Greenstone  
1609

229m<sup>2</sup> Warehouse To Let in Benoni South



R17,175 pm

Gross Monthly Rental R17,175 Excl. VAT

0 0

## Bright & Functional Warehouse in Secure Industrial Park Ideal Light Industrial Space with Excellent

Available immediately, this well-maintained warehouse offers a spacious, high-volume environment within a secure industrial park. Boasting great height to the eaves, abundant natural light, a large on-grade roller shutter door, and reliable three-phase power, it's perfectly suited for light industrial or distribution operations requiring smooth, efficient workflows.

The unit features an open-plan reception and office area, a convenient kitchenette, and clean ablution facilities—providing a practical and comfortable setup for both admin and warehouse staff. Located just off Liverpool Road, with quick access to the N12 and N17 highways, this property combines security, accessibility, and operational ease. Enquire now to secure this ready-to-

## Features

**Zoning** Industrial

### Interior

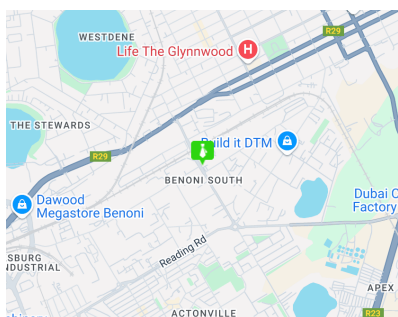
Air Conditioning Yes  
Power 3 Phase Yes

### Exterior

Security Yes

### Sizes

Floor Size 229m<sup>2</sup>



<https://www.newpointproperty.co.za>