

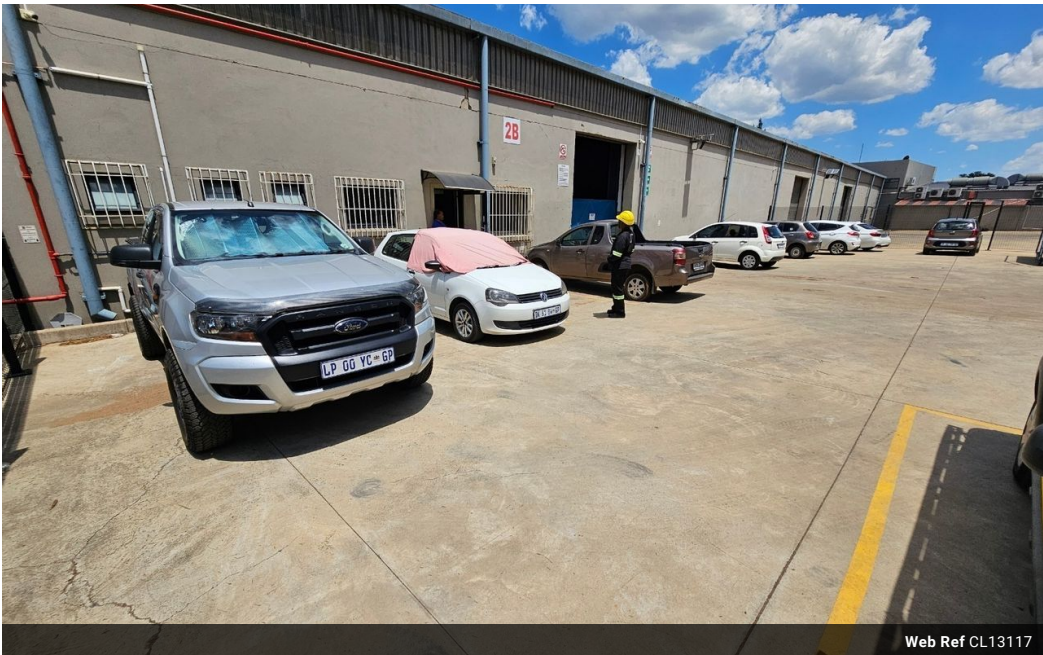


Wayne Churchyard
0817726802
wayne@newpointproperty.co.za

Contact Head Office
010 0354431

Office 40A
Eden Meadows Complex
1 Van Riebeeck Avenue
Greenstone
1609

1,825m² Warehouse To Let in Benoni South



Web Ref CL13117



R127,750 pm

Gross Monthly Rental R127,750 Excl. VAT

0 0

Versatile 1,825m² Warehouse in Secure Benoni South Industrial Park

This well-located 1,825m² warehouse in Benoni South offers the ideal setup for manufacturing, warehousing, or distribution. Situated in a secure industrial park, the property features excellent height, abundant natural light, strong three-phase power, and a large on-grade roller shutter door. A mezzanine level adds valuable storage or operational space, enhancing overall efficiency.

The office component includes a welcoming reception area, multiple private offices, a boardroom, a kitchenette, and staff ablutions—designed for seamless daily operations. With convenient access to Lancaster Road and major highways like the N12

Features

Zoning		Industrial			
Interior		Exterior		Sizes	
Power 3 Phase	Yes	Security	Yes	Floor Size	1,825m²
Power Amps	320			Land Size	30,000m²

