

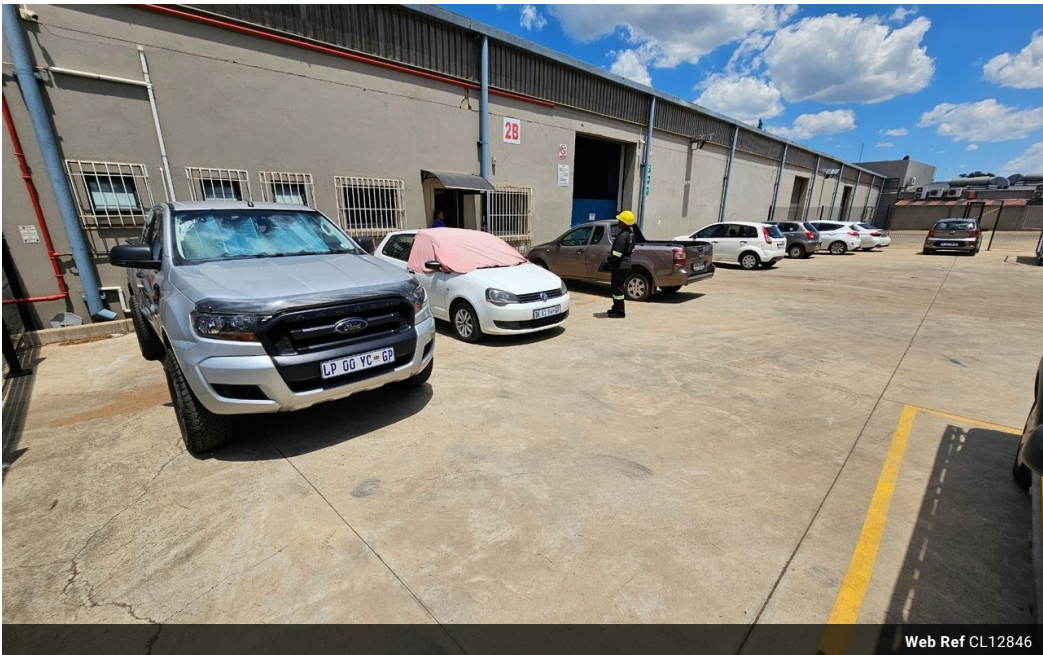


Wayne Churchyard
0817726802
wayne@newpointproperty.co.za

Contact Head Office
010 0354431

Office 40A
Eden Meadows Complex
1 Van Riebeeck Avenue
Greenstone
1609

1,825m² Warehouse To Let in Benoni South



Web Ref CL12846



R127,750 pm

Gross Monthly Rental R127,750 Excl. VAT

0 0

Spacious 1,825m² Warehouse to Let in Secure Benoni South Industrial Park

Positioned in a well-established and secure industrial park in Benoni South, this 1,825m² warehouse offers a functional and efficient layout ideal for manufacturing, storage, or distribution. The property features excellent eave height, ample natural light, and strong three-phase power, all designed to support high-performance operations. A large on-grade roller shutter door and mezzanine level provide added versatility for workflow and storage.

The office component includes a professional reception area, multiple private offices, a boardroom, a kitchenette, and staff ablutions—ensuring comfort and functionality across the board. Conveniently located just off Lancaster Road, the site provides easy access to major transport routes, including the N12 and N17 highways. With ample parking and 24-hour park security, this

Features

Zoning Industrial

Interior
Power 3 Phase Yes
Power Amps 320

Exterior
Security Yes

Sizes
Floor Size 1,825m²
Land Size 30,000m²

