



Wayne Churchyard
0817726802
wayne@newpointproperty.co.za

Contact Head Office

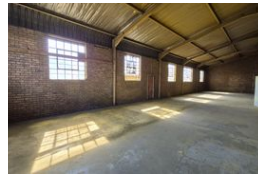
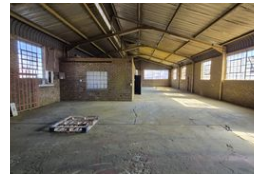
010 0354431

Office 40A
Eden Meadows Complex
1 Van Riebeeck Avenue
Greenstone
1609

315m² Factory To Let in Benoni South



Web Ref CL13723



R13,250 pm

Gross Monthly Rental R13,250 Excl. VAT

0 6

Well-Located 315m² Factory To Let in Benoni South Secure Industrial Unit with Power, Height & Office

Available immediately, this 315m² factory is situated in a secure industrial park in the sought-after Benoni South area. The unit offers excellent height to the eaves, generous natural light, a large on-grade roller shutter door, and ample three-phase power—making it ideal for light manufacturing, storage, or general industrial use.

The interior features a welcoming reception area, multiple private offices, a kitchenette, and ablution facilities for both office and factory staff. Conveniently located just off Main Reef Road with quick access to the N12 and N17 highways, this property

Features

Zoning Industrial

Interior

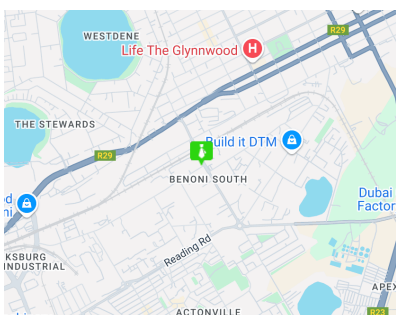
Power 3 Phase Yes

Exterior

Security Yes
Open Parking Bays 6

Sizes

Floor Size 315m²



<https://www.newpointproperty.co.za>