



Wayne Churchyard
0817726802
wayne@newpointproperty.co.za

Contact Head Office

010 0354431

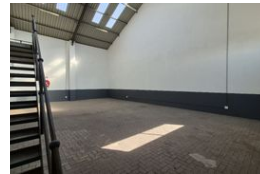
Office 40A
Eden Meadows Complex
1 Van Riebeeck Avenue
Greenstone
1609

288m² Factory To Let in Benoni South

NEW



Web Ref CL13685



R21,860 pm

Gross Monthly Rental R21,860 Excl. VAT



0



0

Secure 288m² Factory Unit in Prime Benoni South Location

Now available to let, this well-maintained 288m² factory is situated in a secure industrial park in the sought-after Benoni South area. With excellent height to the eaves, abundant natural light, a large on-grade roller shutter door, and a reliable three-phase power supply, the space is ideal for light manufacturing, fabrication, or warehousing.

Inside, the unit features a spacious reception area, multiple offices, a kitchenette, and separate ablution facilities for both office and factory staff. Conveniently located just off Liverpool Road with easy access to the N12 and N17 highways, this property offers

Features

Zoning Industrial

Interior

Power 3 Phase

Yes

Exterior

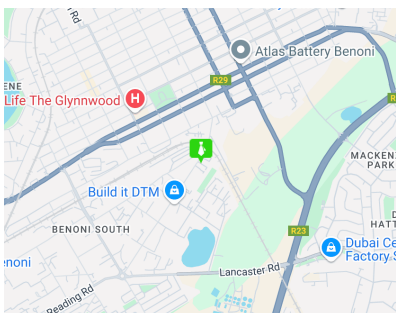
Security

Yes

Sizes

Floor Size

288m²



<https://www.newpointproperty.co.za>