



Dane Davids
0844782022
dane@newpointproperty.co.za

Contact Head Office

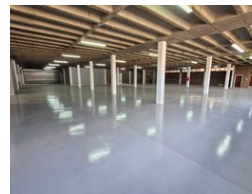
010 0354431

Office 40A
Eden Meadows Complex
1 Van Riebeeck Avenue
Greenstone
1609

NEW



Web Ref CL12486



R37,000,000



Multilevel Warehouse & Factory with Secure Storage in Wynberg

This exceptional multilevel industrial property in Wynberg is now available for sale, offering unparalleled functionality and secure storage solutions. Designed for efficiency, the facility includes a goods lift for seamless movement between levels, with each floor featuring its own roller door for smooth loading and unloading. High-security storage options, including a strongroom and bond store, make this property ideal for businesses handling valuable or bonded goods.

Strategically located in the sought-after Wynberg industrial hub, this property is perfectly suited for warehousing, manufacturing, or distribution operations. The multilevel layout optimizes space, while the secure storage areas add versatility for specialized

Features

Zoning Industrial

Interior

Floor Loading Cap.	10 Tn/m²
Air Conditioning	Yes
Power 3 Phase	Yes
Power Amps	600

Exterior

Security	Yes
----------	-----

Sizes

Floor Size	12,141m²
Land Size	15,000m²
Building Height	15m

