

NEW



**Tyrone Varga**

Principal Property Practitioner  
Registered with PPRA  
(FFC 114 321 7)

072 869 3246

[tyrone@newpointproperty.co.za](mailto:tyrone@newpointproperty.co.za)

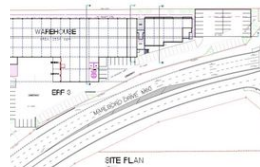
Contact Head Office

010 0354431

Office 40A  
Eden Meadows Complex  
1 Van Riebeeck Avenue  
Greenstone  
1609



Web Ref CL13917



**R12,500,000**

Monthly Levy R1 Excl. VAT

Monthly Rates R1 Excl. VAT

## Prime Industrial Land with High Exposure on Marlboro Drive, Linbro Park

Unlock the potential of 10,960m<sup>2</sup> of fully serviced, flat industrial land perfectly positioned on busy Marlboro Drive in Linbro Park. With outstanding visibility and development-ready infrastructure, this dual-stand opportunity is ideal for warehousing, logistics, or a flagship industrial facility.

Benefit from unbeatable connectivity with quick access to the N3 and proximity to the N1, M1, and R21 highways, ensuring smooth logistics and transport flow. Whether you're developing for your operations or investing in high-demand industrial land, this site

## Features

