



Tyrone Varga
Principal Property
Practitioner
Registered with PPRA
(FFC 114 321 7)
072 869 3246

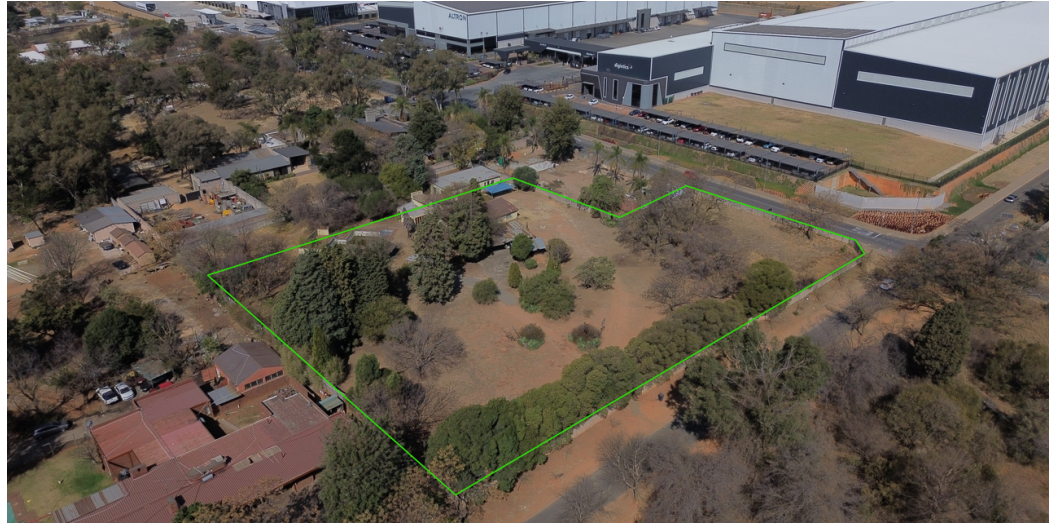
tyrone@newpointproperty.co.za

Contact Head Office

010 0354431

Office 40A
Eden Meadows Complex
1 Van Riebeeck Avenue
Greenstone
1609

8,769m² Vacant Land For Sale in Linbro Park



SOLE MANDATE

Web Ref FS8769LI



R6,138,300

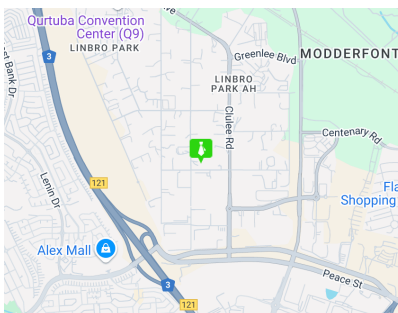
Monthly Rates R5,000 Excl. VAT

Secured Vacant land for sale in Linbro park - Sole mandate

Presenting an excellent development opportunity in the highly sought-after Linbro Park, this vacant stand offers significant potential for industrial/commercial or residential use. Fully walled and secure, the property provides a safe and ready-to-develop space, positioned directly across from a major industrial development, enhancing its appeal for future business ventures.

Although currently zoned as agricultural, the property can be rezoned to align with your specific development needs, making it a versatile option for investors or developers looking to capitalize on the growing demand in the area. The stand's prime location just off the N3 highway ensures exceptional accessibility, connecting you effortlessly to all major routes, making it ideal for logistics,

Features



<https://www.newpointproperty.co.za>