



**Ryan Van Rensburg**  
0846482022  
ryan@newpointproperty.co.za

Contact Head Office

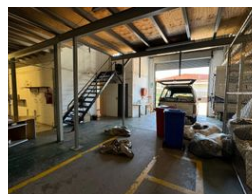
010 0354431

Office 40A  
Eden Meadows Complex  
1 Van Riebeeck Avenue  
Greenstone  
1609

800m<sup>2</sup> Warehouse Sold in Robertville



Web Ref CL12143



R3,800,000



## 800sqm Freestanding Warehouse FOR SALE in Robertville

800sqm free-standing warehouse is now available for sale, offering a clean and well-maintained space with excellent access for seamless operations. The warehouse features a practical mezzanine level equipped with a 2-ton lift, providing efficient vertical storage and handling capabilities. With high-clearance ceilings and expansive floor space, it's an ideal property for businesses seeking flexible storage or industrial use.

In addition to the warehouse, the property includes a well-appointed office space and well-maintained ablution facilities, ensuring a comfortable working environment for staff and visitors. Located in a prime area with easy access to major roads, this property presents a fantastic opportunity for businesses looking to own a versatile and accessible industrial facility. Don't miss the chance

## Features

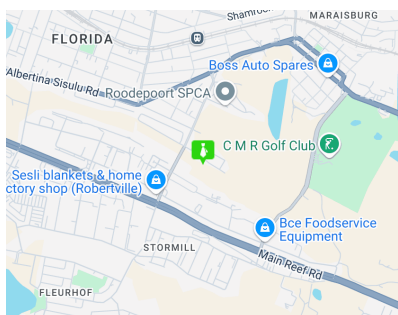
**Zoning** Industrial

### Interior

Floor Loading Cap. 1 Tn/m<sup>2</sup>  
Power 3 Phase Yes

### Sizes

Floor Size 800m<sup>2</sup>  
Land Size 800m<sup>2</sup>



<https://www.newpointproperty.co.za>