



Ryan Van Rensburg
0846482022
ryan@newpointproperty.co.za

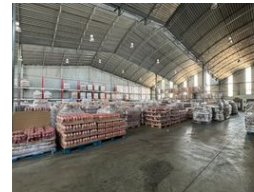
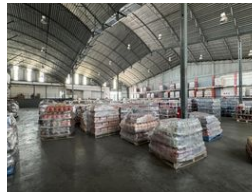
Contact Head Office

010 0354431

Office 40A
Eden Meadows Complex
1 Van Riebeeck Avenue
Greenstone
1609



Web Ref CL12836



R6,900,000



1,721m² Warehouse To Let in Secure Industrial Park – Ideal for Logistics & Manufacturing

This 1,721m² warehouse is situated in a secure industrial park with 24-hour access control. It offers an efficient and streamlined layout suited for storage, manufacturing, or distribution. The space features excellent height to the eaves and a large roller shutter door, allowing for smooth access and maneuverability for trucks and delivery vehicles.

The park is designed with business efficiency in mind, providing strong infrastructure, wide internal roads, and seamless flow for logistics. Equipped with three-phase power, the warehouse can easily support high-energy operations and heavy machinery.

Features

Zoning Industrial

Interior

Floor Loading Cap. 1 Tn/m²
Power 3 Phase Yes

Exterior

Security Yes

Sizes

Floor Size 1,721m²
Land Size 1,721m²

