



Ethan Willett
0844752021
ethan.w@newpointproperty.co.za

Contact Head Office

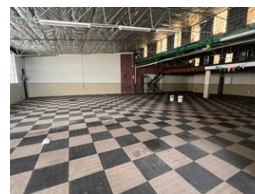
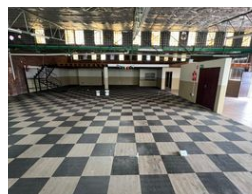
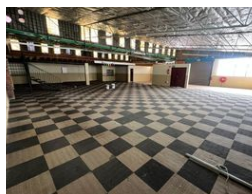
010 0354431

Office 40A
Eden Meadows Complex
1 Van Riebeeck Avenue
Greenstone
1609

380m² Warehouse For Sale in Strijdompark



Web Ref CL13458



R2,500,000

0 4

Secure, Versatile 380m² Industrial Unit with Mezzanine & Power Backup

Now available for purchase at R2,500,000 plus VAT, this well-positioned 380m² industrial unit in Strijdompark, Randburg offers an additional 140m² of mezzanine storage—ideal for businesses needing a balance of workspace and overhead storage. Located just off Malibongwe Drive, the unit ensures excellent access to key commercial hubs and major arterial routes. With two fully fitted kitchens and three restrooms, the space is designed for practical day-to-day operations and staff comfort.

This property prioritizes security and efficiency, featuring a roller shutter door, a gated main entrance, alarm system, and fibre connectivity. A robust 60 KVA three-phase generator ensures uninterrupted operations, and two dedicated parking bays secured by

Features

Zoning Industrial

Interior

Floor Loading Cap. 3 Tn/m²
Power 3 Phase Yes
Power Amps 60

Exterior

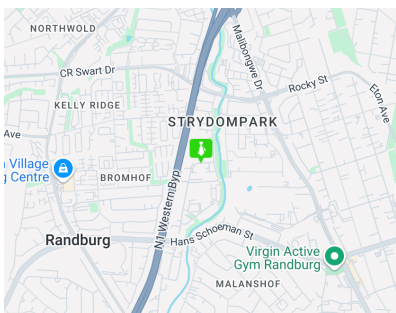
Open Parking Bays 4

Sizes

Floor Size 380m²

Extras

24 Hour Access 24 Hour Response



<https://www.newpointproperty.co.za>