

**Mitchell Pereira**  
Candidate Property  
Practitioner  
Registered with PPRA  
(FFC 118 481 0)  
**0812348999**

[mitchell@newpointproperty.co.za](mailto:mitchell@newpointproperty.co.za)

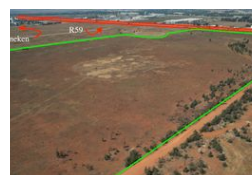
Contact Head Office

**010 0354431**

Office 40A  
Eden Meadows Complex  
1 Van Riebeeck Avenue  
Greenstone  
1609



Web Ref MPFS575636KLIP



**R402,945,200**    **Monthly Levy** R1 Excl. VAT    **Monthly Rates** R1 Excl. VAT

Large zoned and proclaimed Industrial Land along the R59 Highway for sale.

This mammoth piece of industrial zoned land along the R59 has come available for sale in the Kliprivier Meyerton Area. Situated just behind the Heineken (Sedibeng) Brewery. This property is perfectly located with ease of access on and off the R59 Highway. The property has services as well and all bulk charges paid. There is a section 101 certificate which has been issued and the municipality has confirmed services to the properties.

The entire property is made up of 4 Erven. Each can be sold separately. Price per square meter is R700 ex VAT.

ERF 5 - 147 789 (Including servitudes) - 113 905 (excluding servitudes)  
ERF 6 - 143 551 ( Including servitudes) - 127 891 ( excluding servitudes)  
ERF 7 - 127 228 ( Including servitudes) - 119 669 ( excluding servitudes)

## Features

