



Mitchell Pereira
Candidate Property
Practitioner
Registered with PPRA
(FFC 118 481 0)
0812348999

mitchell@newpointproperty.co.za

Contact Head Office

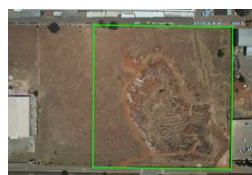
010 0354431

Office 40A
Eden Meadows Complex
1 Van Riebeeck Avenue
Greenstone
1609

42,588m² Industrial Yard For Sale in Kliprivier



Web Ref FS42588KLIP



POA



0



100

Large industrial zoned land for sale in Kliprivier Meyerton.

Large industrial zoned land available for sale in Meyerton. This property measures approx 42 588m² and is walled off on two sides. The access to the property is via a service road which supports Superlink access. There is fibre available in the area from the main road. The property is conveniently situated close to the main road and has ease of access on and off the R59 highways. The property is also level and flat.

ERF extend : 42 588m²
Gas available in the area
Fibre available in the area

Features

Zoning Industrial

Interior

Power 3 Phase Yes

Exterior

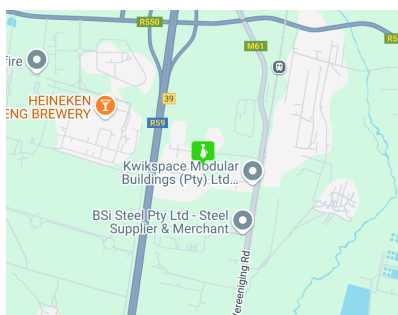
Open Parking Bays 100

Sizes

Floor Size 42,588m²
Land Size 42,588m²

Extras

24 Hour Access



<https://www.newpointproperty.co.za>