



Mitchell Pereira
Candidate Property
Practitioner
Registered with PPRA
(FFC 118 481 0)
0812348999

mitchell@newpointproperty.co.za

Contact Head Office

010 0354431

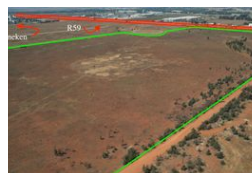
Office 40A
Eden Meadows Complex
1 Van Riebeeck Avenue
Greenstone
1609

157,068m² Industrial Yard For Sale in Kliprivier

NEW



Web Ref FS157068KLIP



POA



0



100

Zoned and proclaimed Industrial Land along the R59 Highway for sale.

This mammoth piece of industrial zoned land along the R59 has come available for sale in the Kliprivier Meyerton Area. Situated just behind the Heineken (Sedibeng) Brewery. This property is perfectly located with ease of access on and off the R59 Highway. The property has services as well and all bulk charges paid. There is a section 101 certificate which has been issued and the municipality has confirmed services to the properties.

The entire property is made up of 4 Erven. Each can be sold separately. Price per square meter is R700 ex VAT.

ERF 5 - 147 789 (Including servitudes) - 113 905 (excluding servitudes)
ERF 6 - 143 551 (Including servitudes) - 127 891 (excluding servitudes)
ERF 7 - 127 228 (Including servitudes) - 119 669 (excluding servitudes)

Features

Zoning Industrial

Interior

Power 3 Phase Yes

Exterior

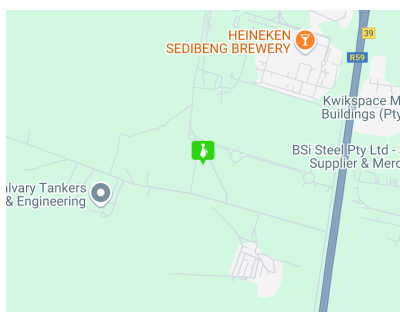
Open Parking Bays 100

Sizes

Floor Size 157,068m²
Land Size 157,068m²

Extras

24 Hour Access



<https://www.newpointproperty.co.za>