



**Marcel Carneiro**  
Candidate Property  
Practitioner  
Registered with PPRA  
(FFC 120 075 3)  
**0846932233**

[marcel@newpointproperty.co.za](mailto:marcel@newpointproperty.co.za)

Contact Head Office

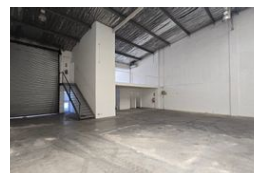
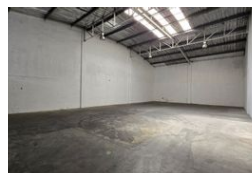
**010 0354431**

Office 40A  
Eden Meadows Complex  
1 Van Riebeeck Avenue  
Greenstone  
1609

460m<sup>2</sup> Warehouse For Sale in Spartan



Web Ref MC460FSS



**R3,150,000**

Monthly Levy R1 Excl. VAT

Monthly Rates R1 Excl. VAT



460sqm Industrial warehouse in a secure business park for sale in Spartan

Situated within the highly sought-after industrial hub of Spartan, this meticulously maintained 460 sqm industrial warehouse, nestled within a secure park, is now available for sale. Boasting an impressive eaves height and abundant natural lighting, the warehouse creates an optimal workspace environment. Effortless entry to the warehouse is facilitated by a sizable front-facing roller shutter door, and the property is supplied with a 60-amp three-phase power to accommodate diverse operational requirements.

The office segment of the property features an open and inviting reception area with open plan offices. This professional space is complemented by male and female ablution facilities and a convenient kitchenette. Adequate parking space is thoughtfully

## Features

**Zoning** Industrial

### Interior

Floor Loading Cap. 1 Tn/m<sup>2</sup>  
Power 3 Phase Yes  
Power Amps 60

### Exterior

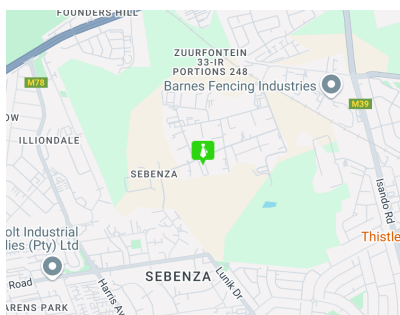
Security Yes  
Covered Parking Bays 2  
Open Parking Bays 2

### Sizes

Floor Size 460m<sup>2</sup>  
Land Size 460m<sup>2</sup>  
Building Height 8m

### Extras

24 Hour Access Security Estate



<https://www.newpointproperty.co.za>