

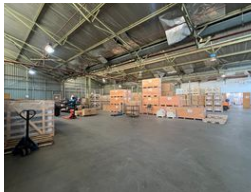


Mitchell Pereira
Candidate Property Practitioner
Registered with PPRA
(FFC 118 481 0)
0812348999
mitchell@newpointproperty.co.za

Contact Head Office
010 0354431

Office 40A
Eden Meadows Complex
1 Van Riebeeck Avenue
Greenstone
1609

6,061m² Factory For Sale in Steeledale



R34,000,000

Monthly Levy R1 Excl. VAT Monthly Rates R1 Excl. VAT

20 20

Landmark 6,000m² Facility To Let in Steeledale – Ideal for Manufacturing, Storage & Sales

This prominent 6,061m² industrial facility in Steeledale offers exceptional versatility for businesses in manufacturing, warehousing, wholesale, or storage. Featuring a spacious warehouse with multiple roller shutter doors, firewalls, a full sprinkler system, and excellent height (4–5m to eaves), the property also boasts a large yard for seamless truck access. Its corner position ensures great visibility and exposure to foot traffic.

Inside, the office component includes a generous cash sales counter and several private offices, ideal for customer-facing operations. The site also offers ample covered parking for both staff and clients. Secure a prime spot in one of Johannesburg

Features

Zoning Industrial

Interior		Exterior		Sizes	
Power 3 Phase	Yes	Security	Yes	Floor Size	6,061m²
Power Amps	1000	Covered Parking Bays	20	Land Size	9,300m²
		Open Parking Bays	20		

