



**Dane Davids**  
0844782022  
dane@newpointproperty.co.za

Contact Head Office

010 0354431

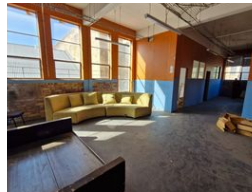
Office 40A  
Eden Meadows Complex  
1 Van Riebeeck Avenue  
Greenstone  
1609

2,415m<sup>2</sup> Investment For Sale in Newtown

NEW



Web Ref CL13372



R4,500,000

Monthly Levy R1 Excl. VAT

Monthly Rates R1 Excl. VAT



## Premium Retail Spaces with Maximum R24 Exposure – Ideal for Your Business

Position your brand for success with these high-end retail units along the busy R24 highway in Germiston. Offering three premium-grade buildings with sleek finishes, modern amenities, and versatile layouts, this development is perfect for a wide range of businesses seeking professional, customer-friendly space in a secure, high-traffic environment.

Located near the Meadowdale commercial and industrial hub, these units enjoy unbeatable visibility and access—just minutes from OR Tambo International Airport and major transport routes. Surrounded by popular retailers like Makro and Builders, this is a golden opportunity to grow your business in one of the East Rand's most sought-after retail locations. Enquire today to secure your

## Features

**Zoning** Industrial

### Interior

Floor Loading Cap.  
Power Amps

10 Tn/m<sup>2</sup>  
60

### Exterior

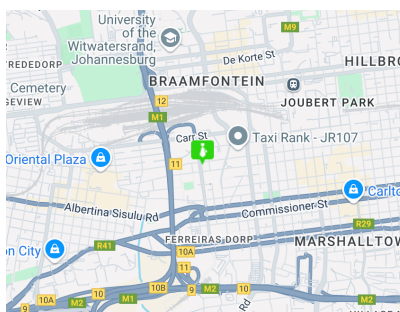
Security

Yes

### Sizes

Floor Size  
Land Size  
Building Height

2,415m<sup>2</sup>  
518m<sup>2</sup>  
20m



<https://www.newpointproperty.co.za>