



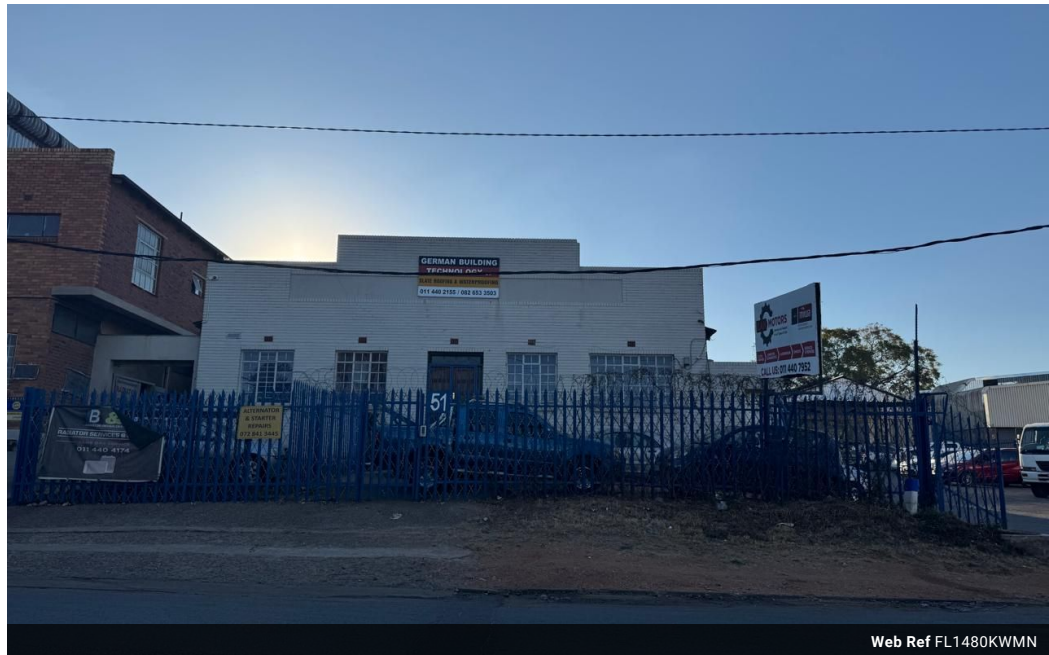
Miguel Naidoo
0745822026
miguel@newpointproperty.co.za

Contact Head Office

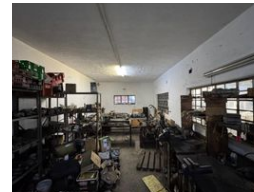
010 0354431

Office 40A
Eden Meadows Complex
1 Van Riebeeck Avenue
Greenstone
1609

1,480m² Warehouse For Sale in Kew



Web Ref FL1480KWMN



R2,000,000

Monthly Levy R1 Excl. VAT

Monthly Rates R1 Excl. VAT

4 10

1480m² industrial Warehouse Unit For Sale in Kew

This impressive 1,480m² industrial warehouse unit located in the heart of Kew offers an exceptional opportunity for businesses seeking a versatile, spacious, and strategically positioned property. The warehouse boasts a substantial floor area designed to accommodate a wide range of operational needs, from manufacturing and distribution to storage and logistics. High ceilings and wide-span open-plan layouts provide ample room for racking, bulk storage, and vehicle movement, while large roller shutter doors allow for easy loading and offloading of goods. The structure is solid and secure, built for durability, with high-quality materials that ensure long-term reliability and low maintenance. The interior is well-lit, with good natural light and ample power supply, making it

Features

Zoning Industrial

Interior

Floor Loading Cap.	1 Tn/m ²
Air Conditioning	Yes
Power 3 Phase	Yes

Exterior

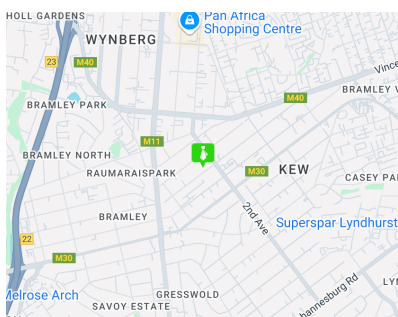
Covered Parking Bays	4
Open Parking Bays	10

Sizes

Floor Size	1,480m ²
Land Size	10,000m ²
Building Height	10m

Extras

Air Conditioner



<https://www.newpointproperty.co.za>