



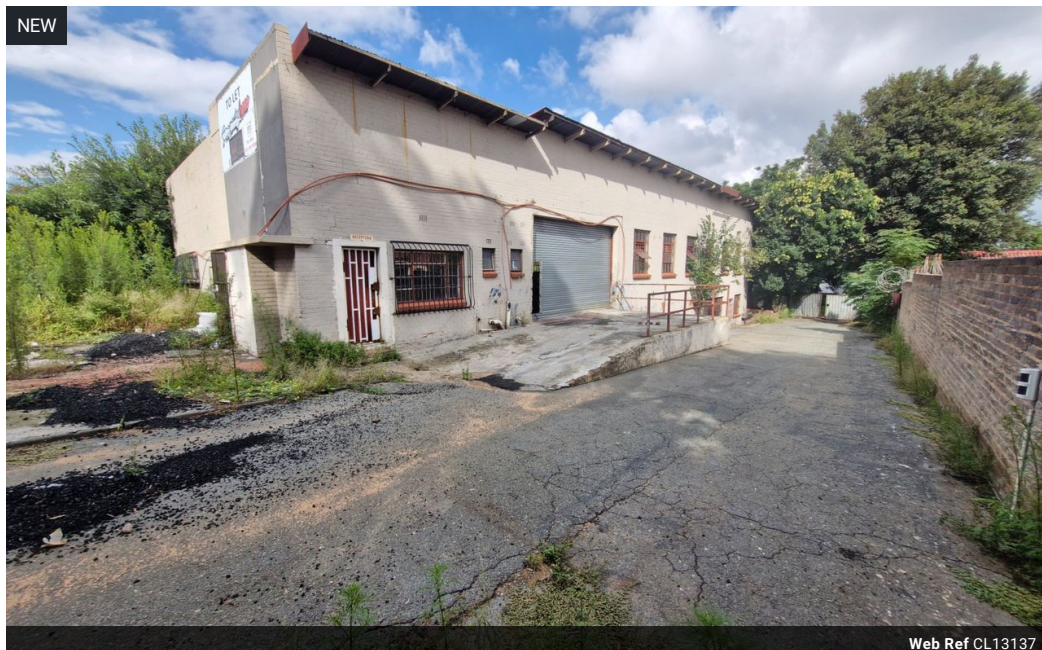
Dane Davids  
0844782022  
dane@newpointproperty.co.za

Contact Head Office

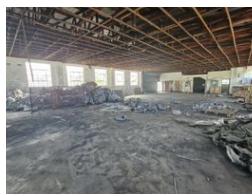
010 0354431

Office 40A  
Eden Meadows Complex  
1 Van Riebeeck Avenue  
Greenstone  
1609

750m<sup>2</sup> Warehouse For Sale in Kew



Web Ref CL13137



R2,750,000

Monthly Levy R1 Excl. VAT

Monthly Rates R1 Excl. VAT



## Central Kew Warehouse with Yard Access – Ideal for Industrial Operations

Discover this well-kept industrial warehouse in Kew, Johannesburg—perfectly positioned for businesses needing accessibility and functionality. The property offers a generous paved yard with excellent truck access and an on-grade roller door for easy loading. Inside, the warehouse features good internal height, strong natural light, and a flexible open-plan layout suited for a range of industrial uses.

The office component is neat and practical, offering a mix of open and private workspaces, along with staff ablutions and kitchenette facilities. Located in a well-established industrial hub with quick access to key transport routes, this space is ideal for

## Features

**Zoning** Industrial

### Interior

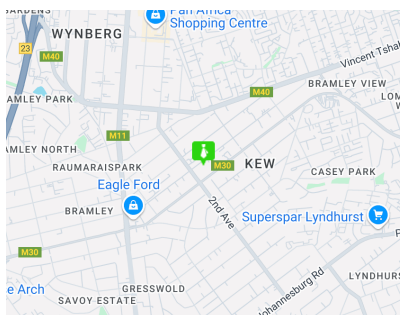
Floor Loading Cap. 10 Tn/m<sup>2</sup>  
Power 3 Phase Yes  
Power Amps 150

### Exterior

Open Parking Bays 10

### Sizes

Floor Size 750m<sup>2</sup>  
Land Size 3,000m<sup>2</sup>  
Building Height 7m



<https://www.newpointproperty.co.za>