



Robin Mulligan
Candidate Property
Practitioner
Registered with PPRA
(FFC 121 152 0)
0713556301

robin@newpointproperty.co.za

Contact Head Office

010 0354431

Office 40A
Eden Meadows Complex
1 Van Riebeeck Avenue
Greenstone
1609

Make an Offer

Market value
R76,000,000

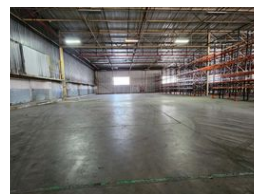
Offers from
R75,000,000

Offers for this listing must be made in R20,000 increments

12,732m² Warehouse For Sale in Heriotdale



Web Ref CL13053



R76,000,000

30 10

Versatile 12,732m² Industrial Facility with Cold Storage & 3-Phase Power in Heriotdale

This well-located 12,732m² warehouse on a 15,885m² stand in Heriotdale, Johannesburg, is now available for sale. Centrally positioned with easy access to the M2 highway, the freestanding property is ideal for logistics, warehousing, or manufacturing operations. It features multiple large roller shutter doors (on-grade and dock level), excellent internal height, and existing cold storage facilities that can be reconfigured as needed. A robust 3-phase 1,250-amp power supply, backup generator, and full sprinkler system with pumps and tanks ensure uninterrupted operation.

The double-storey office component offers a modern reception area, multiple private offices, boardrooms, kitchens, and canteen areas. Additional staff amenities include male and female ablutions, changing rooms, and showers, making this facility ideal for a

Features

Zoning Industrial

Interior

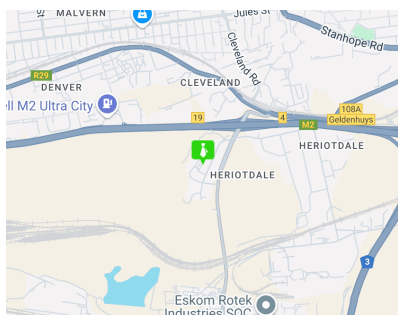
| | |
|------------------|------|
| Air Conditioning | Yes |
| Power 3 Phase | Yes |
| Power Amps | 1250 |

Exterior

| | |
|----------------------|----|
| Covered Parking Bays | 30 |
| Open Parking Bays | 10 |

Sizes

| | |
|-----------------|----------------------|
| Floor Size | 12,732m ² |
| Land Size | 15,885m ² |
| Building Height | 15m |



<https://www.newpointproperty.co.za>