



Robin Mulligan
Candidate Property
Practitioner
Registered with PPRA
(FFC 121 152 0)
0713556301

robin@newpointproperty.co.za

Contact Head Office

010 0354431

Office 40A
Eden Meadows Complex
1 Van Riebeeck Avenue
Greenstone
1609

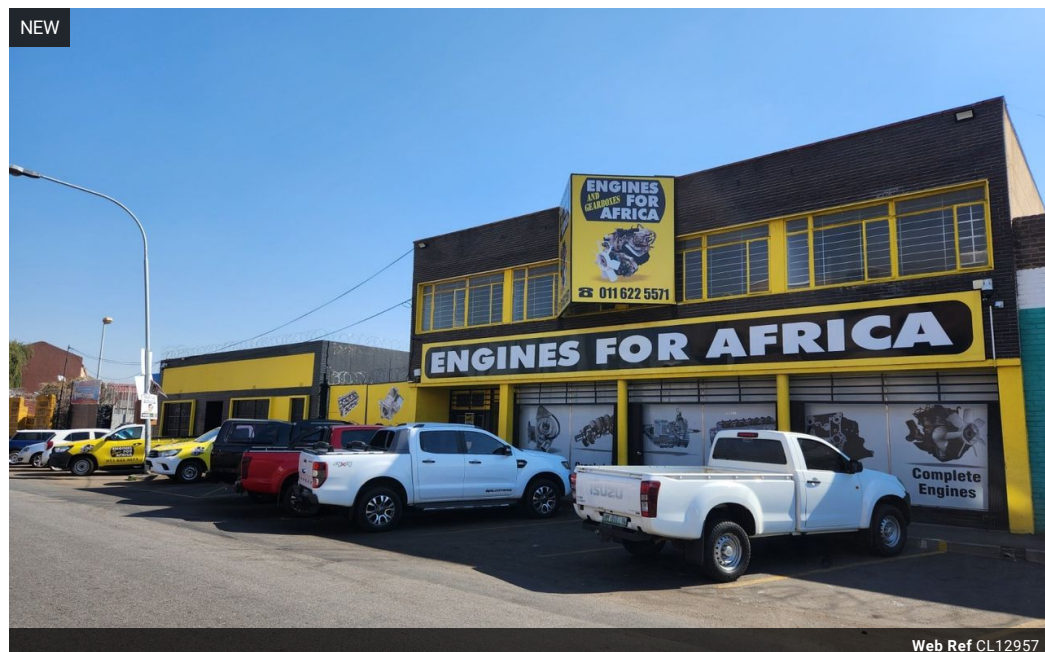
Make an Offer

Market value
R3,000,000

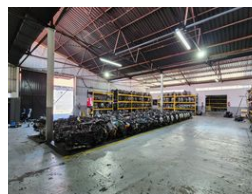
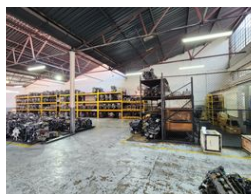
Offers from
R4,800,000

Offers for this listing must be made in R10,000 increments

1,600m² Warehouse For Sale in Denver



Web Ref CL12957



R3,000,000



6



15

High-Exposure Industrial Warehouse with Exceptional Yard Space

Situated in the bustling heart of Denver's industrial zone, this 1,600m² freestanding warehouse offers unbeatable main road exposure and fast access to the M2 Highway. The property is split into two generous warehouse spaces, each boasting high ceilings, excellent natural light, and reliable three-phase power. A secure yard between the buildings enhances functionality, while ample front-facing parking ensures convenience for both staff and visitors. An expansive 2,000m² yard at the rear provides ideal space for truck parking, storage, or extended operations.

Inside, the office component features a welcoming open-plan reception with a built-in sales counter, two private offices, a guest

Features

Zoning Industrial

Interior

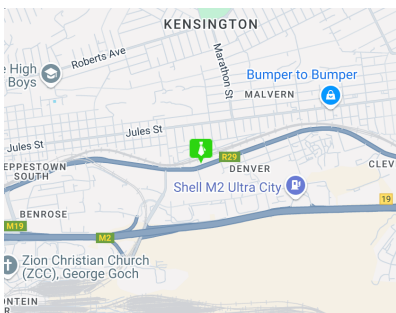
| | |
|---------------|-----|
| Power 3 Phase | Yes |
| Power Amps | 120 |

Exterior

| | |
|----------------------|----|
| Covered Parking Bays | 6 |
| Open Parking Bays | 15 |

Sizes

| | |
|-----------------|---------------------|
| Floor Size | 1,600m ² |
| Land Size | 4,800m ² |
| Building Height | 6m |



<https://www.newpointproperty.co.za>