



Jarred Purchase
Candidate Property
Practitioner
Registered with PPRA
(FFC 118 480 9)
0763465458

jarred@newpointproperty.co.za

Contact Head Office

010 0354431

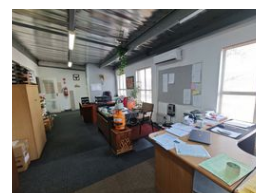
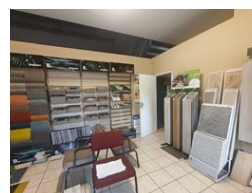
Office 40A
Eden Meadows Complex
1 Van Riebeeck Avenue
Greenstone
1609

178m² Factory For Sale in City Deep



SOLE MANDATE

Web Ref JP178630CL



R1,376,550

Monthly Levy R2,500 Excl. VAT

Monthly Rates R1,500 Excl. VAT

0 4

178m² Mini Industrial Unit in Secure City Deep Park – Ideal for Light Manufacturing or Warehousing

Exclusively listed by Newpoint Property Group, this neat and efficient 178m² mini unit is perfectly suited for warehousing, light manufacturing, or small-scale distribution. Located in a secure business park in the heart of City Deep, it features excellent height, great natural lighting, and a large on-grade roller shutter door for smooth loading and operations. The unit is powered by an 80-amp three-phase supply, ensuring uninterrupted workflow.

The office component includes a professional ground-floor reception and a spacious open-plan office upstairs, along with restrooms on both levels and a kitchenette for staff convenience. With 24/7 park security and quick access to the Johannesburg Market and major highways including the N17, M1, and M2, this unit is a strategic choice for owner-occupiers or investors. Contact

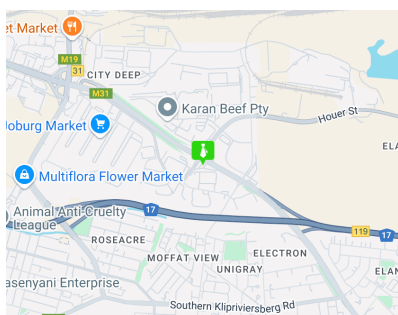
Features

Zoning Industrial

Interior
Power 3 Phase Yes

Exterior
Security Yes
Open Parking Bays 4

Sizes
Floor Size 178m²
Land Size 178m²
Building Height 6m



<https://www.newpointproperty.co.za>