



Martin Montgomery

Candidate Property Practitioner
Registered with PPRA
(FFC 121 152 3)

0818542055

martin@newpointproperty.co.za

Contact Head Office

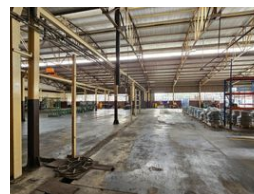
010 0354431

Office 40A
Eden Meadows Complex
1 Van Riebeeck Avenue
Greenstone
1609

1,800m² Factory For Sale in Wadeville



Web Ref CL11014



R9,500,000



1 800m² Factory in Wadeville, Germiston

A clean and meticulously maintained industrial factory is now available for lease in the thriving industrial hub of Wadeville, Germiston. This versatile property is equipped with a robust 400-amp electrical supply, making it suitable for a variety of industrial activities, from heavy engineering to plastic molding. The factory's setup is ideal for businesses requiring high-powered equipment and efficient operations.

Access is seamless, with two spacious roller doors designed to accommodate large trucks, ensuring smooth logistics and transport flow. The interior features a substantial office component, perfect for housing a sizable administrative team. For added convenience, ample covered staff parking is available just outside the building. Additionally, the property is equipped with multiple

Features

Building Name Zoning

Unit 1 Haring Park
Industrial

Interior

Floor Loading Cap. 10 Tn/m²
Power 3 Phase Yes
Power Amps 450

Sizes

Floor Size 1,800m²
Land Size 2,500m²
Building Height 6m

