



Brandon Whitehead

Candidate Property
Practitioner
Registered with PPRA
(FFC 121 151 9)

0817743977

brandon@newpointproperty.co.za

Contact Head Office

010 0354431

Office 40A
Eden Meadows Complex
1 Van Riebeeck Avenue
Greenstone
1609

Make an Offer

Market value
R57,900,000

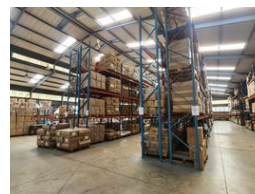
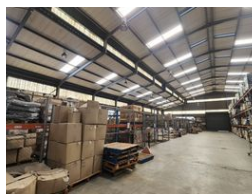
Offers from
R57,000,000

Offers for this listing must be made in R100,000 increments

8,120m² Warehouse For Sale in Meadowdale



Web Ref CL13022



R57,900,000

15 50

High-Capacity Industrial Facility in Meadowdale – Ideal for Logistics, Warehousing & Manufacturing

Positioned on a generous 12,800m² stand, this immaculate 8,120m² freestanding industrial property in Meadowdale offers a powerful combination of space, functionality, and accessibility. Perfectly suited for logistics, warehousing, distribution, or manufacturing operations, the facility features two expansive factories, a stylish showroom, a modern office component, and a welcoming reception area. Designed for efficiency, the property includes two dedicated truck access points, exceptional ceiling height, excellent natural lighting, and a substantial three-phase power supply. On-site ablutions, a kitchenette, and plentiful parking ensure a fully equipped environment for staff and clients alike.

Strategically located in the highly sought-after Meadowdale industrial node, this property boasts easy access to major arterial

Features

Zoning Industrial

Interior

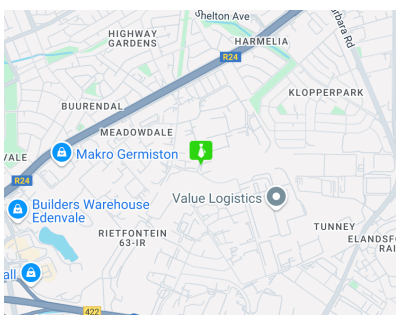
Air Conditioning	Yes
Power 3 Phase	Yes

Exterior

Covered Parking Bays	15
Open Parking Bays	50

Sizes

Floor Size	8,120m ²
Land Size	12,800m ²
Building Height	8m



<https://www.newpointproperty.co.za>