



**Robin Mulligan**  
Candidate Property Practitioner  
Registered with PPRA  
(FFC 121 152 0)  
0713556301

robin@newpointproperty.co.za

Contact Head Office

010 0354431

Office 40A  
Eden Meadows Complex  
1 Van Riebeeck Avenue  
Greenstone  
1609

Make an Offer

Market value  
R60,000,000

Offers from  
R58,000,000

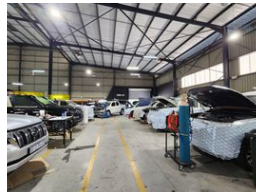
Highest offer  
R58,000,000

Offers for this listing must be made in R20,000 increments

3,904m² Warehouse For Sale in Gosforth Park



Web Ref RM173904CL



R60,000,000

6 100

Prime Investment with 10-Year Lease & Massive Truck Yard in Gosforth Park

Invest with confidence in this exceptional industrial opportunity located in the secure Gosforth Park Industrial Estate. This 2,904m² warehouse is newly leased on a 10-year agreement, offering immediate returns and long-term stability. The facility includes 2,100m² of high-volume warehouse space, multiple roller shutter doors, and 250 amps of 3-phase power (upgradeable), all set on its own stand for efficient truck access. A 700m² A-grade office component over two levels enhances operational functionality with reception, boardrooms, and mezzanine views.

Adding significant value is the expansive 10,400m² paved truck yard, complete with a 1,000m² workshop, truck wash bay, and dual-level office space with full visibility across operations. Purpose-built for high-throughput logistics, this site also includes ample

Features

Zoning Industrial

Interior	
Air Conditioning	Yes
Power 3 Phase	Yes
Power Amps	650

Exterior	
Security	Yes
Covered Parking Bays	6
Open Parking Bays	100

Sizes	
Floor Size	3,904m²
Land Size	14,400m²
Building Height	10m

