



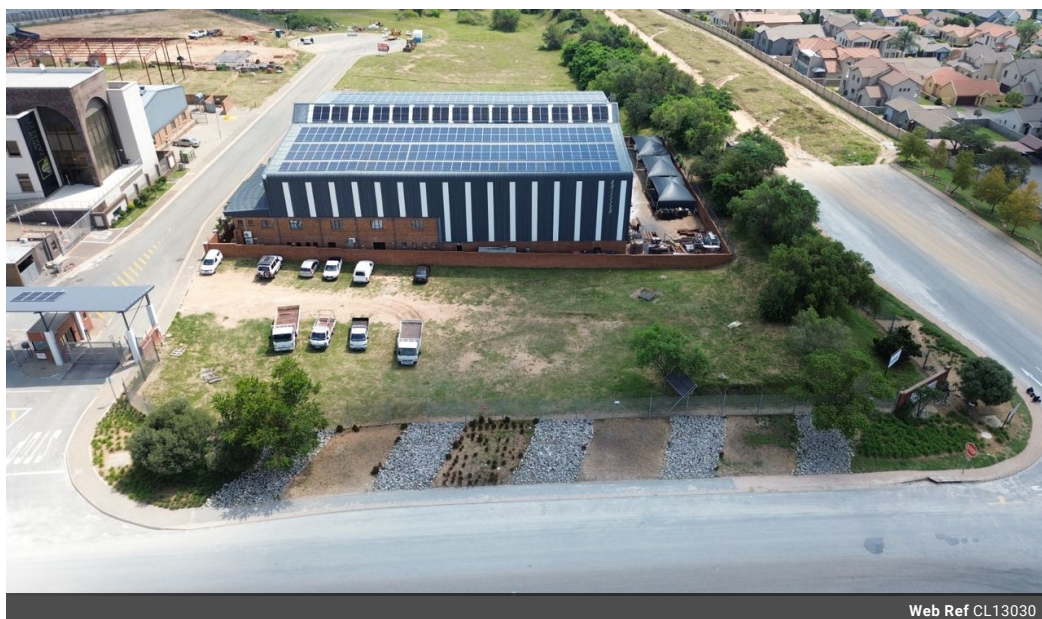
Nathan Broodryk
0844223210
nathan@newpointproperty.co.za

Contact Head Office

010 0354431

Office 40A
Eden Meadows Complex
1 Van Riebeeck Avenue
Greenstone
1609

2,410m² Warehouse For Sale in Samrand Business Park



Web Ref CL13030



R3,012,500



0



0

Prime 2,410sqm Industrial Stand in Secure Samrand Park – Ideal for Development

This level 2,410 sqm stand is located in the sought-after Samrand area within a secure, access-controlled industrial park. Zoned for industrial use, the property is perfect for developing a warehouse, logistics hub, or manufacturing facility. The park offers 24-hour security, giving peace of mind to owners and tenants alike.

With direct access to major highways like the N1 and N3, the site is ideally positioned for transport and distribution. As demand for industrial space in Samrand continues to rise, this property presents a valuable opportunity for investors or businesses looking to

Features

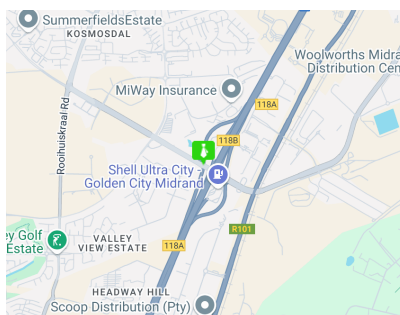
Zoning Industrial

Interior

Power 3 Phase Yes

Sizes

Floor Size 2,410m²
Land Size 2,410m²



<https://www.newpointproperty.co.za>