



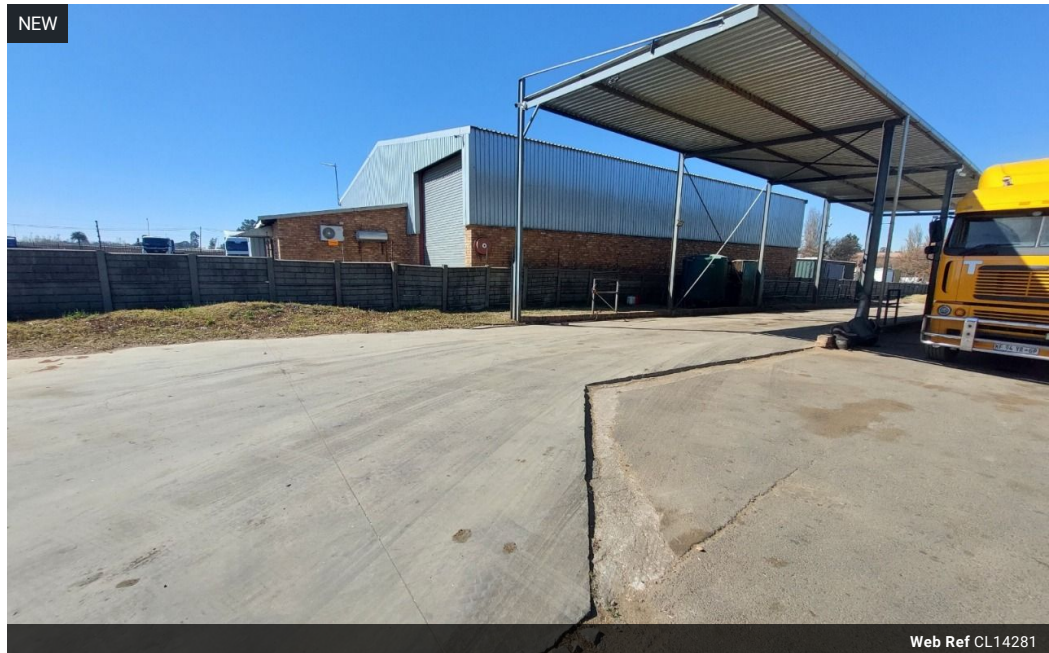
Wayne Churchyard
0817726802
wayne@newpointproperty.co.za

Contact Head Office

010 0354431

Office 40A
Eden Meadows Complex
1 Van Riebeeck Avenue
Greenstone
1609

NEW



Web Ref CL14281



R10,000,000

 20  10

Prime 24,000m² Truck Yard in Vulcania

Unlock operational efficiency with this expansive 24,000m² truck yard, strategically located just off the N17 highway. Designed for transport and logistics, the property includes a wash bay, diesel tanks, workshop, and dedicated driver facilities—providing a turnkey solution for fleet-based businesses.

The site also features a well-appointed office block with a reception area, boardroom, and private offices, plus ample on-site parking for staff and clients. With excellent accessibility and essential infrastructure in place, this yard is ready to support and

Features

Zoning Industrial

Interior
Power 3 Phase Yes

Exterior
Security Yes
Covered Parking Bays 20
Open Parking Bays 10

Sizes
Floor Size 845m²
Land Size 24,000m²