



Wayne Churchyard  
0817726802  
wayne@newpointproperty.co.za

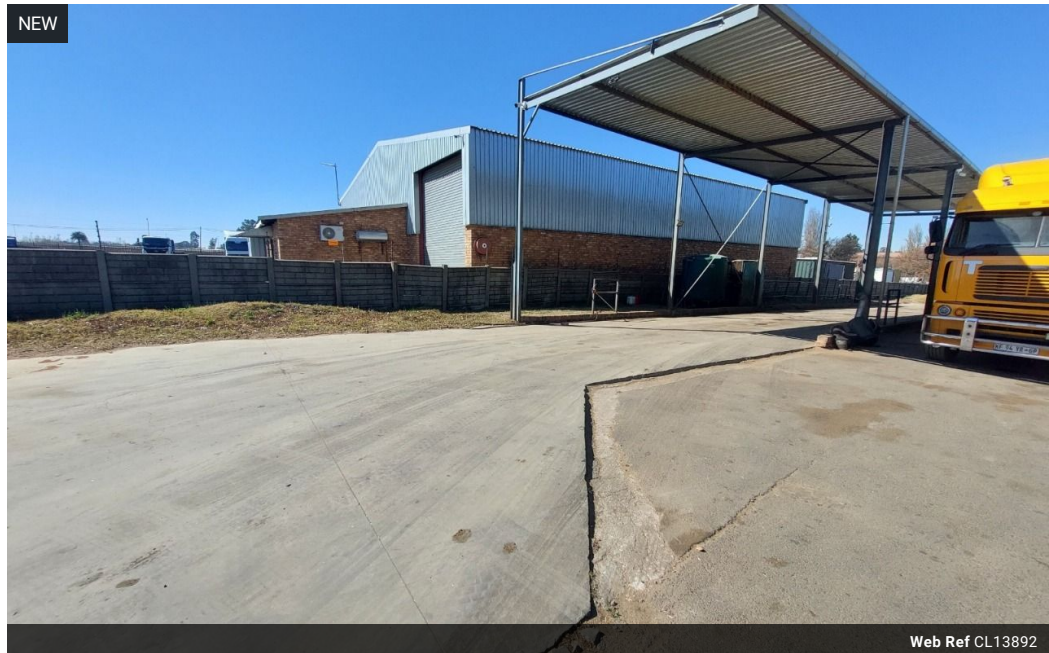
Contact Head Office

010 0354431

Office 40A  
Eden Meadows Complex  
1 Van Riebeeck Avenue  
Greenstone  
1609

845m<sup>2</sup> Warehouse For Sale in Witpoort Estates

NEW



Web Ref CL13892



R10,000,000

20 10

Fully Equipped 24,000m<sup>2</sup> Truck Yard in Vulcania – Ideal for Transport & Logistics

Unlock immediate operational value with this rare 24,000m<sup>2</sup> truck yard in Vulcania, perfectly positioned just off the N17 highway. Designed for transport and logistics, the site includes a wash bay, diesel tanks, workshop, and dedicated driver facilities, offering a turnkey solution for fleet-based businesses.

A well-appointed office block features a reception area, boardroom, and private offices, with ample on-site parking to support your team and clients. With excellent access and essential infrastructure in place, this property is ready to boost your logistics

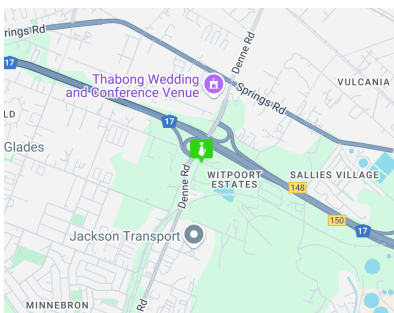
## Features

**Zoning** Industrial

**Interior**  
Power 3 Phase Yes

**Exterior**  
Security Yes  
Covered Parking Bays 20  
Open Parking Bays 10

**Sizes**  
Floor Size 845m<sup>2</sup>  
Land Size 24,000m<sup>2</sup>



<https://www.newpointproperty.co.za>