



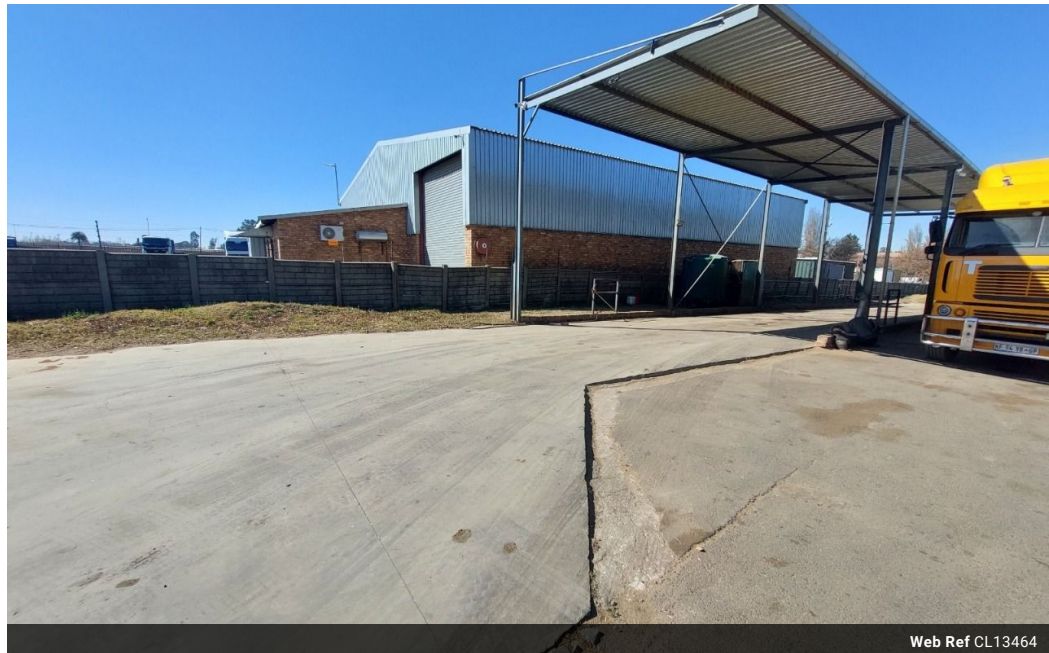
Wayne Churchyard  
0817726802  
wayne@newpointproperty.co.za

Contact Head Office

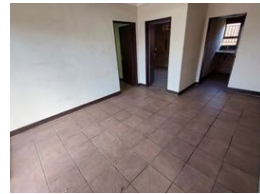
010 0354431

Office 40A  
Eden Meadows Complex  
1 Van Riebeeck Avenue  
Greenstone  
1609

845m<sup>2</sup> Warehouse For Sale in Witpoort Estates



Web Ref CL13464



R10,000,000

 20  10

## Prime 24,000m<sup>2</sup> Truck Yard with Full Facilities in Vulcania – Ideal for Fleet Operations

Seize this rare chance to secure a fully equipped 24,000m<sup>2</sup> truck yard in the highly accessible Vulcania area, just off the N17 highway. Perfectly set up for transport and logistics businesses, the property offers key operational features including a wash bay, workshop, diesel tanks, and driver facilities with change rooms and ablutions—making it a ready-to-go hub for fleet management.

The site also includes a professional office block with a welcoming reception, boardroom, private offices, and plenty of on-site parking. Whether you're looking to grow your transport fleet or invest in a strategically located industrial asset, this property

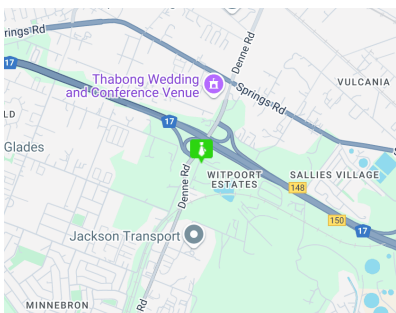
## Features

**Zoning** Industrial

**Interior**  
Power 3 Phase Yes

**Exterior**  
Security Yes  
Covered Parking Bays 20  
Open Parking Bays 10

**Sizes**  
Floor Size 845m<sup>2</sup>  
Land Size 24,000m<sup>2</sup>



<https://www.newpointproperty.co.za>