



Donovan Saunders

Candidate Property Practitioner
Registered with PPRA
(FFC 121 151 8)

0743713355

donovan@newpointproperty.co.za

Contact Head Office

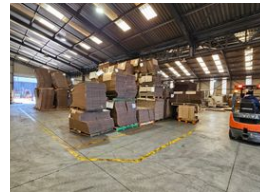
010 0354431

Office 40A
Eden Meadows Complex
1 Van Riebeeck Avenue
Greenstone
1609

1,800m² Warehouse For Sale in Lilianton



Web Ref DS1800LFS



R4,500,000



1800sqm Industrial warehouse for sale in Lilianton!

This well-presented freestanding 1800sqm industrial warehouse is ready for immediate occupancy and offers excellent accessibility just off a main road, making it ideal for businesses requiring convenient logistics and visibility. The property is fully secured with steel palisade and electric fencing, ensuring a safe operating environment. A small yard area is available, complemented by eight dedicated parking bays for staff and visitors.

Inside, the warehouse features generous internal height and multiple roller shutter doors, facilitating smooth truck access and loading. The facility is equipped with 150 amps of three-phase power, suitable for light to medium industrial use. The office component is modern and versatile, offering a welcoming reception, 6–8 offices, a boardroom, training room, and staff ablutions.

Features

Zoning Industrial

Interior

Power 3 Phase Yes
Power Amps 150

Sizes

Floor Size 1,800m²
Land Size 2,278m²
Building Height 7m



<https://www.newpointproperty.co.za>